

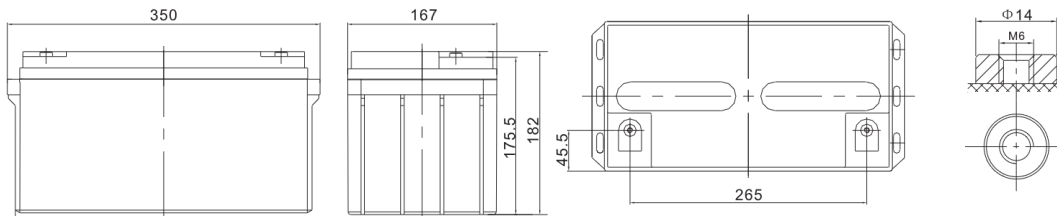


SBL 80-12i



Nominal Voltage	12 V
Nominal capacity	84,8 Ah @ C20 to 1,75 V/cell
	80 Ah @ C10 to 1,80 V/cell
Technology	AGM (Absorbent Glass Mat)
	VRLA (Valve Regulated Lead Acid)
Weight	~ 23 kg
Design life time	12 years (standby use)
	Long Life acc. Eurobat
Internal resistance	~ 6 mΩ (full charged)

Operating temperature range	Discharge -20°C ~ +60°C
	Charge 0°C ~ +50°C
	Storage -20°C ~ +60°C
Max. discharge current	800 A (5 sec)
Short circuit current	1840 A
Max. charging current	24 A
Charging voltage	Standby use 13,6 ~ 13,8 VDC
	Cycle use 14,6 ~ 14,8 VDC
Self discharge	Monthly is less than 3% at 25°C
Container material	ABS UL94HB (optional UL94-V0)



Length	350 ±2 mm
Width	167 ±2 mm
Height	182 ±2 mm
Total height	182 ±2 mm
Internal thread M6 (breaking torque 8-10 Nm)	

CONSTANT CURRENT DISCHARGE CHARACTERISTICS (A at 25°C)

Voltage/Time	10 MIN	15 MIN	30 MIN	60 MIN	2 H	3 H	4 H	5 H	8 H	10 H	20 H
1.60 V	195,3	148,3	87,6	48,9	29,1	22,6	17,70	15,10	10,10	8,44	4,410
1.65 V	184,5	141,8	84,1	47,2	28,2	21,9	17,30	14,70	10,00	8,34	4,340
1.70 V	169,9	132,8	80,4	45,7	27,3	21,3	16,80	14,30	9,87	8,21	4,290
1.75 V	155,5	123,6	76,8	44,0	26,3	20,6	16,40	14,00	9,74	8,10	4,240
1.80 V	140,7	114,1	73,4	42,3	25,4	20,0	15,90	13,60	9,57	8,00	4,200
1.85 V	115,0	94,7	63,3	38,0	23,2	18,5	14,80	12,70	8,99	7,53	3,990

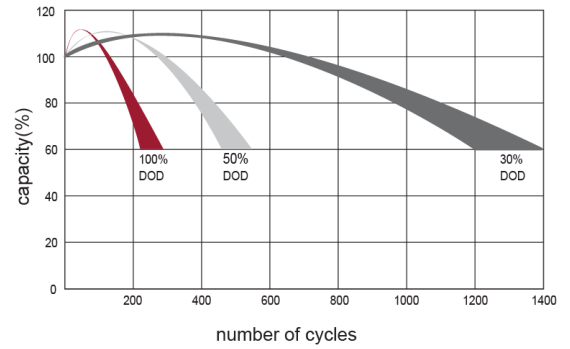
CONSTANT POWER DISCHARGE CHARACTERISTICS (W/cell at 25°C)

Voltage/Time	10 MIN	15 MIN	30 MIN	60 MIN	2 H	3 H	4 H	5 H	8 H	10 H	20 H
1.60 V	331,9	259,3	159,1	91,9	55,19	43,10	34,05	29,09	19,81	16,59	8,690
1.65 V	319,7	251,6	154,4	89,2	53,69	41,94	33,25	28,44	19,63	16,41	8,570
1.70 V	299,7	239,2	149,0	86,9	52,21	40,98	32,47	27,80	19,37	16,18	8,470
1.75 V	279,3	225,8	143,9	84,2	50,62	39,93	31,76	27,19	19,14	15,99	8,380
1.80 V	257,2	211,4	138,9	81,4	49,05	38,85	30,95	26,59	18,86	15,81	8,310
1.85 V	213,9	177,9	120,8	73,5	45,19	36,07	28,88	24,88	17,74	14,90	7,900

EFFECT OF TEMPERATURE ON LONG TERM LIFE



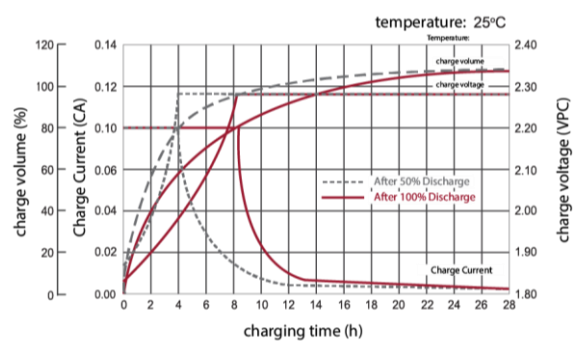
CYCLE LIFE IN RELATION TO DEPTH OF DISCHARGE



DISCHARGE CHARACTERISTICS CURVE



CHARGE CHARACTERISTIC CURVE FOR CYCLE USE



RELATIONSHIP BETWEEN CHARGING VOLTAGE AND TEMPERATURE



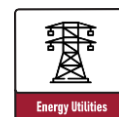
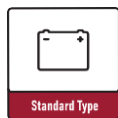
STORAGE CHARACTERISTICS



Standards met:

PN-EN 60896-21:2007 • PN-EN 60896-22:2007 • PN-EN 61056-1:2013 • PN-EN 61056-2:2013 • PN-E-83016:1999

Akumulatory produkowane z zachowaniem: ISO 9001 • ISO 14001



All data contained in this document, are subject to change. Wamtechnik Sp. z o.o. reserves the right to change them without prior notice.