

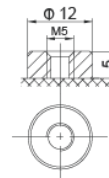
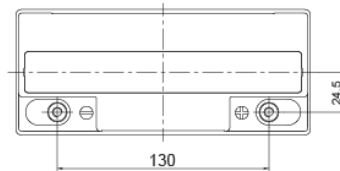
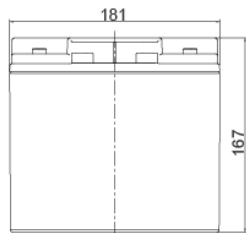


SBL 22-12HR



Nominal voltage	12 V
Nominal capacity	666 W / 10min to 1,67 V/cel 22 Ah @ C20 to 1,75 V/cell
Technology	AGM (Absorbent Glass Mat) VRLA (Valve Regulated Lead Acid)
Weight	~ 6,3 kg
Design life time	10-12 years (standby use) Long Life acc. Eurobat
Internal resistance	~ 10 mΩ (full charged)

Operating temperature range	Discharge -20°C ~ +60°C
	Charge 0°C ~ +50°C
	Storage -20°C ~ +60°C
Max. discharge current	220 A (5 sec)
Short circuit current	920 A
Max. charging current	6,6 A
Charging voltage	Standby use 13,7 ~ 13,9 VDC
	Cycle use 14,6 ~ 14,8 VDC
Self discharge	Monthly is less than 3% at 25°C
Container material	ABS UL94HB (optional UL94-V0)



Length	181 ± 2 mm
Width	77 ± 2 mm
Height	167 ± 2 mm
Total height	167 ± 2 mm
Terminal	gwint wewnętrzny M5 (moment dokręcenia 6 ÷ 7 Nm)

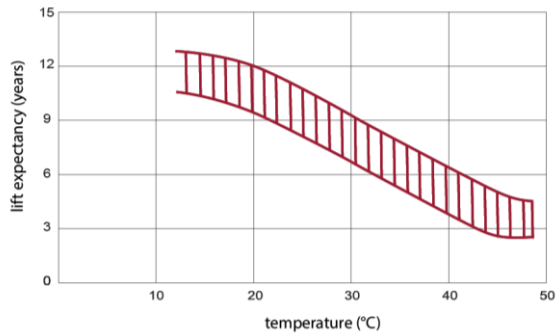
CONSTANT CURRENT DISCHARGE CHARACTERISTICS (A at 25°C)

Voltage/Time	5 MIN	8 MIN	10 MIN	15 MIN	20 MIN	30 MIN	60 MIN	90 MIN
1.60 V	90,78	74,15	64,94	50,97	40,06	28,54	16,01	11,35
1.67 V	82,38	67,80	59,86	47,67	37,81	27,05	15,26	10,86
1.70 V	78,82	65,11	57,69	46,20	36,80	26,38	14,92	10,66
1.75 V	73,01	60,65	54,06	43,63	34,97	25,27	14,42	10,33
1.80 V	66,87	56,06	50,43	41,43	33,32	24,17	13,88	9,97
1.85 V	57,18	47,77	42,81	35,53	28,94	21,38	12,55	9,12

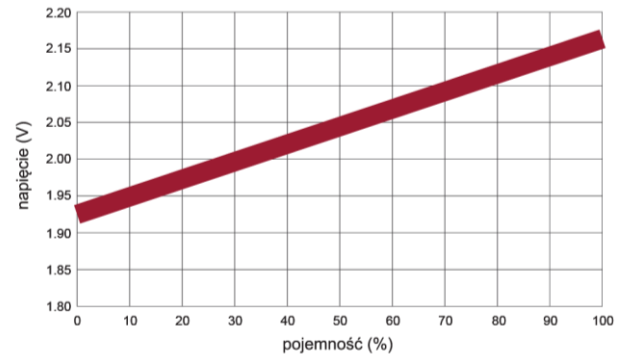
CONSTANT POWER DISCHARGE CHARACTERISTICS (W/cell at 25°C)

Voltage/Time	5 MIN	8 MIN	10 MIN	15 MIN	20 MIN	30 MIN	60 MIN	90 MIN
1.60 V	163,10	133,70	117,50	93,13	74,20	54,40	31,90	23,30
1.67 V	149,90	125,00	111,00	88,80	70,38	52,40	30,70	22,40
1.70 V	144,70	122,00	108,00	87,00	68,89	51,50	30,10	22,00
1.75 V	135,40	117,00	103,00	84,00	67,00	50,70	30,00	21,80
1.80 V	129,00	113,00	97,40	81,00	65,90	49,90	29,80	21,60
1.85 V	109,20	91,35	81,99	68,20	55,78	41,34	24,43	17,79

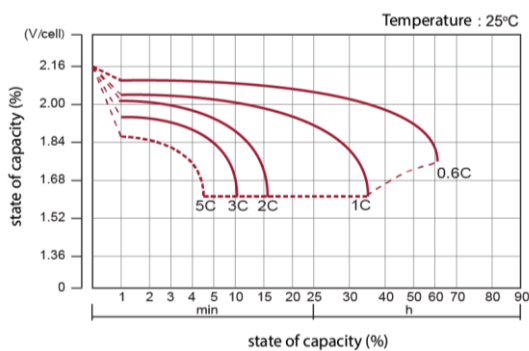
EFFECT OF TEMPERATURE ON LONG TERM LIFE



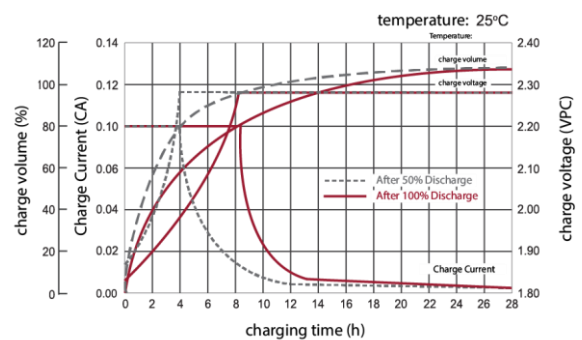
CHARGE CHARACTERISTIC CURVE FOR STANDBY USE



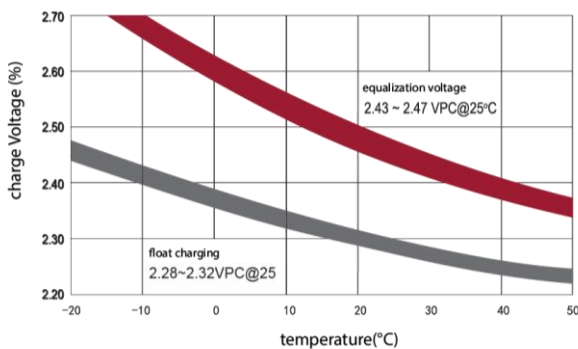
DISCHARGE CHARACTERISTICS CURVE



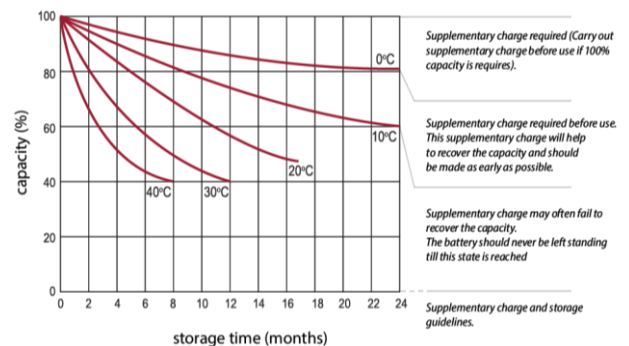
CHARGE CHARACTERISTIC CURVE FOR CYCLE USE



RELATIONSHIP BETWEEN CHARGING VOLTAGE AND TEMPERATURE



STORAGE CHARACTERISTICS



Standards met:

PN-EN 60896-21:2007 • PN-EN 60896-22:2007 • PN-EN 61056-1:2013 • PN-EN 61056-2:2013 • PN-E-83016:1999

Batteries manufactured in compliance with: ISO 9001 • ISO 14001



AGM Technology	VRLA Maintenance Free	Standard Type	FOR INDUSTRIAL USE	Recyclable	10-12 Years Life Expect. EUROBAT
High Rate Type	UPS	Emergency Lighting	Security Systems	Energy Utilities	DC Power Supply

All data contained in this document, are subject to change. Wamtechnik Sp. z o.o. reserves the right to change them without prior notice.

Wamtechnik Sp. z o.o. ul. Techniczna 2 bud. H 05-500 Piaseczno
Tel. +48 22 701 26 00, office@wamtechnik.pl, www.wamtechnik.pl