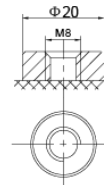
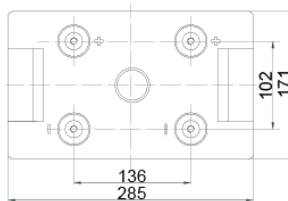
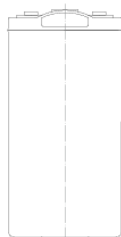




SBL 800-2i

Nominal voltage	2 V
Nominal capacity	800 Ah @ C10 to 1,80 V/cell
Technology	AGM (Absorbent Glass Mat) VRLA (Valve Regulated Lead Acid)
Weight	~ 30 kg
Design life time	20 years (standby use) Very Long Life acc. Eurobat
Internal resistance	~ 0,50 mΩ (full charged)

Operating temperature range	Discharge -20°C ~ +60°C
	Charge 0°C ~ +50°C
	Storage -20°C ~ +60°C
Max. discharge current	3000 (5 sec)
Short circuit current	6370 A
Max. charging current	160 A
Charging voltage	Standby use 2,27 ~ 2,30 VDC
	Cycle use 2,43 ~ 2,47 VDC
Self discharge	Monthly is less than 3% at 25°C
Container material	ABS UL94HB (optional UL94-V0)



Length	285 ±2 mm
Width	171 ±2 mm
Height	330 ±2 mm
Total height	342 ±2 mm
Terminal type	Internal thread M8 (breaking torque 10-12 Nm)

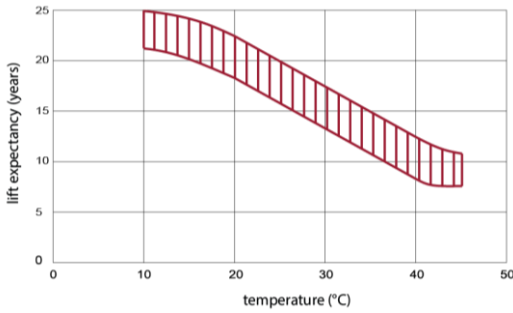
CONSTANT CURRENT DISCHARGE CHARACTERISTICS (A at 25°C)

Voltage/Time	10 MIN	15 MIN	30 MIN	1 H	2 H	3 H	5 H	8 H	10 H	20 H
1.60V	1016,3	871,4	648,8	452,7	288,8	215,1	144,5	99,80	83,60	43,89
1.65V	960,4	811,4	611,2	446,0	284,5	212,7	143,3	99,00	82,80	43,47
1.70V	895,2	770,0	588,6	434,4	279,7	208,7	140,9	97,80	82,40	43,26
1.75V	796,5	704,2	556,0	416,4	272,9	204,7	138,9	96,61	81,20	42,63
1.80V	674,0	629,9	520,3	400,4	263,7	200,4	136,1	95,01	80,00	42,00
1.85V	548,4	519,7	447,0	357,2	240,6	184,1	126,2	88,62	74,80	39,27

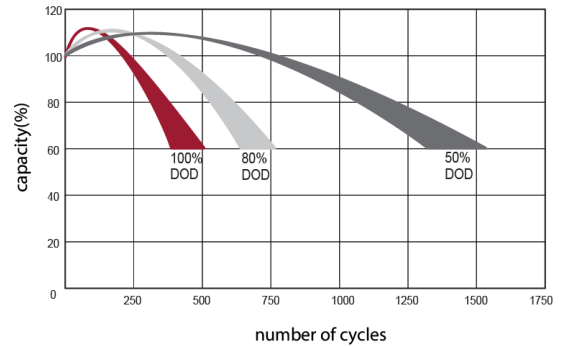
CONSTANT POWER DISCHARGE CHARACTERISTICS (W/cell at 25°C)

Voltage/Time	10 MIN	15 MIN	30 MIN	1 H	2 H	3 H	5 H	8 H	10 H	20 H
1.60V	1708	1471	1139	848,8	548,2	411,5	279,8	195,6	165,2	86,73
1.65V	1666	1441	1123	839,6	543,4	409,1	277,8	194,8	164,0	86,10
1.70V	1579	1384	1090	823,6	534,3	402,4	275,4	192,8	162,8	85,47
1.75V	1432	1287	1040	796,4	522,7	395,6	271,0	190,8	161,2	84,63
1.80V	1232	1166	985,2	771,2	511,5	388,9	266,3	188,0	158,8	83,37
1.85V	1020	978,0	853,5	689,3	467,7	359,1	248,0	176,0	149,2	78,33

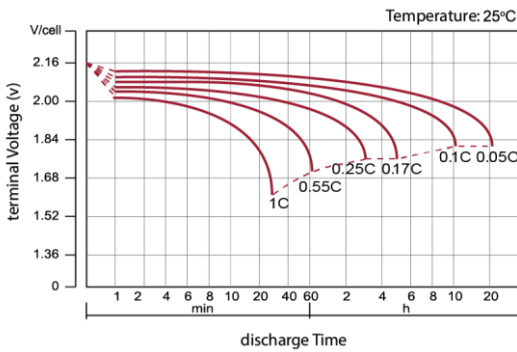
EFFECT OF TEMPERATURE ON LONG TERM LIFE



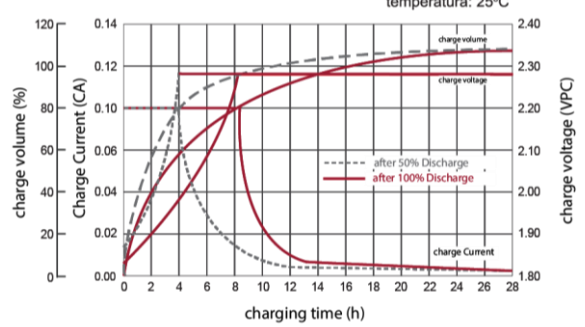
CYCLE LIFE IN RELATION TO DEPTH OF DISCHARGE



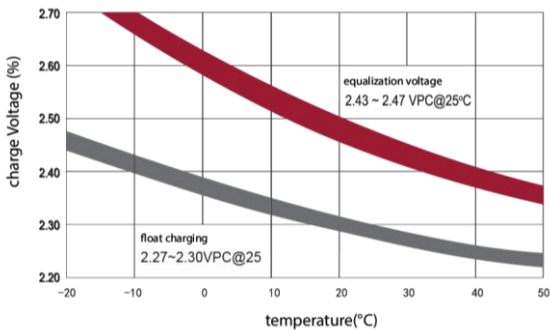
DISCHARGE CHARACTERISTICS CURVE



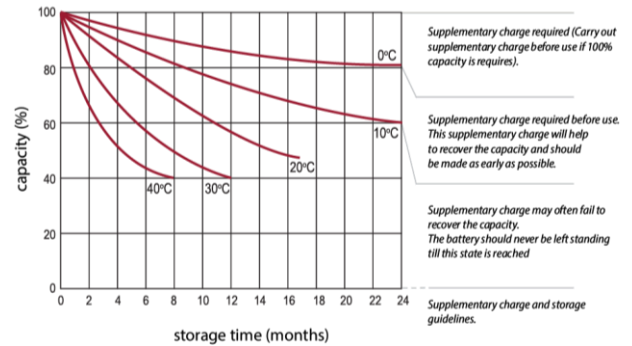
CHARGE CHARACTERISTIC CURVE FOR CYCLE USE



RELATIONSHIP BETWEEN CHARGING VOLTAGE AND TEMPERATURE



STORAGE CHARACTERISTICS



Standards met:

PN-EN 60896-21:2007 • PN-EN 60896-22:2007 • PN-EN 61056-1:2013 • PN-EN 61056-2:2013 • PN-E-83016:1999

Batteries manufactured in compliance with: ISO 9001 • ISO 14001

					> 12 Years Life Expect. EUROBAT icon"/>

All data contained in this document, are subject to change. Wamtechnik Sp. z o.o. reserves the right to change them without prior notice.