

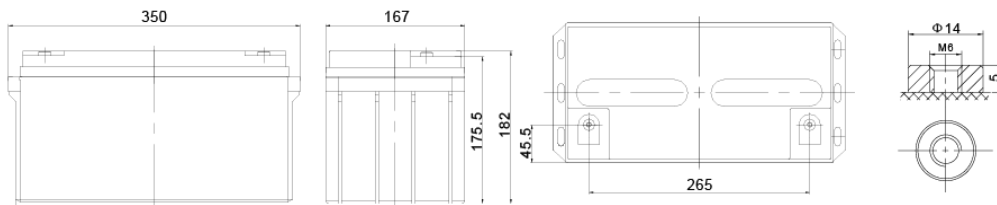


SBL 70-12i



Nominal voltage	12 V
Nominal Capacity	74,2 Ah @ C20 to 1,75 V/cell
	70 Ah @ C10 to 1,80 V/cell
Technology	AGM (Absorbent Glass Mat)
	VRLA (Valve Regulated Lead Acid)
Weight	~ 22,5 kg
Design life time	12 years (standby use)
	Long Life acc. Eurobat
Internal resistance	~ 6 mΩ (full charged)

Operating temperature range	Discharge -20°C ~ +60°C
	Charge 0°C ~ +50°C
	Storage -20°C ~ +60°C
Max. discharge current	700 A (5 sec)
Short circuit current	1520 A
Max. charging current	21,0 A
Charging voltage	Standby use 13,6 ~ 13,8 VDC
	Cycle use 14,6 ~ 14,8 VDC
Self discharge	Monthly is less than 3% at 25°C
Container material	ABS UL94HB (optional UL94-V0)



Length	350 ±2 mm
Width	167 ±2 mm
Height	182 ±2 mm
Total height	182 ±2 mm
Internal thread M6 (breaking torque 8-10 Nm)	

CONSTANT CURRENT DISCHARGE CHARACTERISTICS (A at 25°C)

Voltage/Time	10 MIN	15 MIN	30 MIN	60 MIN	2 H	3 H	4 H	5 H	8 H	10 H	20 H
1.60 V	170,8	129,8	76,7	42,8	25,5	19,7	15,5	13,2	8,88	7,38	3,86
1.65 V	161,4	124,1	73,6	41,3	24,7	19,1	15,1	12,9	8,78	7,29	3,80
1.70 V	148,6	116,2	70,3	40,0	23,9	18,6	14,7	12,5	8,64	7,18	3,76
1.75 V	136,0	108,1	67,2	38,5	23,0	18,1	14,3	12,2	8,52	7,09	3,71
1.80 V	123,2	99,9	64,3	37,0	22,2	17,5	13,9	11,9	8,38	7,00	3,67
1.85 V	100,6	82,9	55,3	33,2	20,3	16,2	12,9	11,1	7,86	6,59	3,49

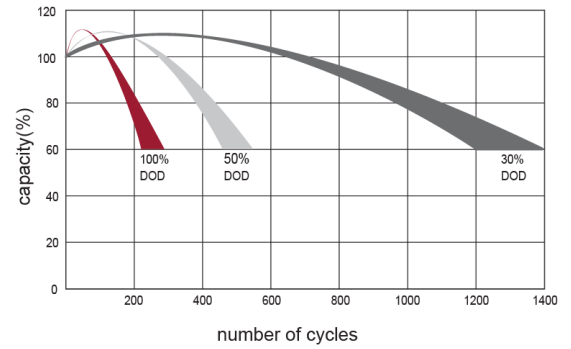
CONSTANT POWER DISCHARGE CHARACTERISTICS (W/cell at 25°C)

Voltage/Time	10 MIN	15 MIN	30 MIN	60 MIN	2 H	3 H	4 H	5 H	8 H	10 H	20 H
1.60 V	296,7	227,5	139,2	82,6	50,2	37,7	30,3	25,7	17,4	14,9	7,65
1.65 V	295,5	226,2	135,8	81,9	49,8	36,9	30,1	25,5	17,3	14,8	7,60
1.70 V	286,7	220,1	132,5	80,2	49,0	36,3	29,7	25,2	17,1	14,6	7,53
1.75 V	276,0	212,6	128,5	77,9	47,9	35,6	29,1	24,7	16,8	14,4	7,43
1.80 V	260,2	201,7	122,8	74,7	46,4	34,5	28,3	24,1	16,4	14,0	7,29
1.85 V	238,6	186,8	114,9	70,6	44,4	33,2	27,2	23,3	15,9	13,6	7,11

EFFECT OF TEMPERATURE ON LONG TERM LIFE



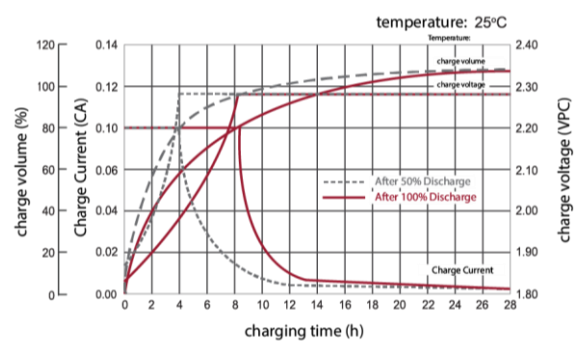
CYCLE LIFE IN RELATION TO DEPTH OF DISCHARGE



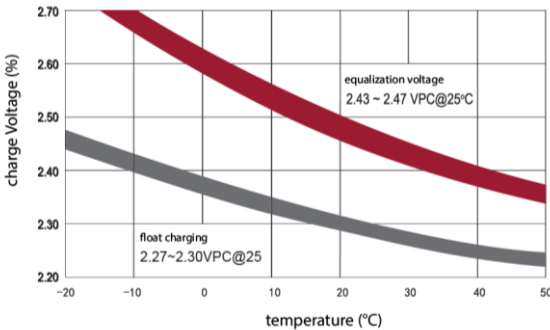
DISCHARGE CHARACTERISTICS CURVE



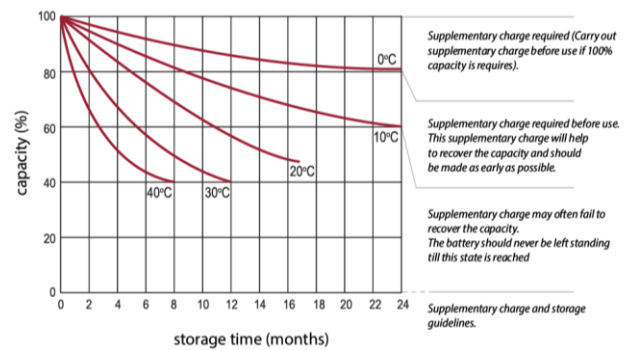
CHARGE CHARACTERISTIC CURVE FOR CYCLE USE



RELATIONSHIP BETWEEN CHARGING VOLTAGE AND TEMPERATURE



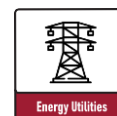
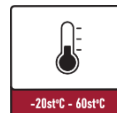
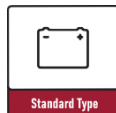
STORAGE CHARACTERISTICS



Standards met:

PN-EN 60896-21:2007 • PN-EN 60896-22:2007 • PN-EN 61056-1:2013 • PN-EN 61056-2:2013 • PN-E-83016:1999

Batteries manufactured in compliance with: ISO 9001 • ISO 14001



All data contained in this document, are subject to change. Wamtechnik Sp. z o.o. reserves the right to change them without prior notice.