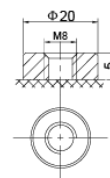
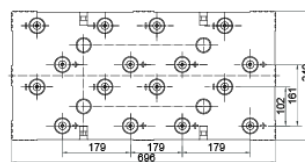
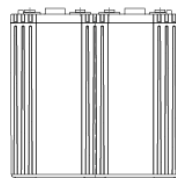
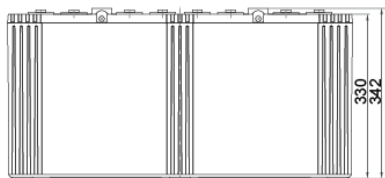




# SBL 3000-2i

<b>Nominal voltage</b>	2 V	<b>Operating temperature range</b>	Discharge -20°C ~ +60°C
<b>Nominal capacity</b>	3000 Ah @ C10 to 1,80 V/cell		Charge 0°C ~ +50°C
			Storage -20°C ~ +60°C
<b>Technology</b>	AGM (Absorbent Glass Mat) VRLA (Valve Regulated Lead Acid)	<b>Max. discharge current</b>	8000 (5 sec)
		<b>Short circuit current</b>	23150 A
<b>Weight</b>	~ 170 kg	<b>Max. charging current</b>	600 A
<b>Design life time</b>	20 years (standby use) Very Long Life acc. Eurobat	<b>Charging voltage</b>	Standby use 2,27 ~ 2,30 VDC Cycle use 2,43 ~ 2,47 VDC
<b>Internal resistance</b>	~ 0,30 mΩ (full charged)	<b>Self discharge</b>	Monthly is less than 3% at 25°C
		<b>Container material</b>	ABS UL94HB (optional UL94-V0)



<b>Length</b>	696 ±2 mm
<b>Width</b>	340 ±2 mm
<b>Height</b>	330 ±2 mm
<b>Total height</b>	342 ±2 mm
<b>Terminal type</b>	Internal thread M8 (breaking torque 10-12 Nm)

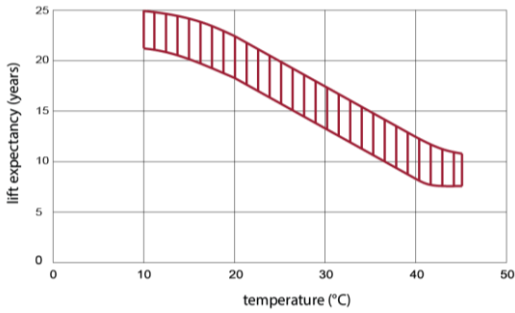
## CONSTANT CURRENT DISCHARGE CHARACTERISTICS (A at 25°C)

Voltage/Time	30MIN	1HR	2HR	3HR	4HR	5HR	8HR	10HR	20HR
1.60V	2901	1833	1129	846,1	681,1	566,0	380,4	316,5	164,9
1.65V	2814	1770	1093	820,0	662,7	551,3	376,1	312,6	162,9
1.70V	2690	1713	1057	797,8	644,7	537,0	370,3	307,9	160,4
1.75V	2571	1650	1020	773,9	628,2	523,5	365,2	303,9	158,3
1.80V	2457	1587	983,3	750,0	610,1	510,0	358,9	300,0	156,3
1.85V	2116	1423	901,0	693,3	567,1	475,6	337,0	282,4	147,1

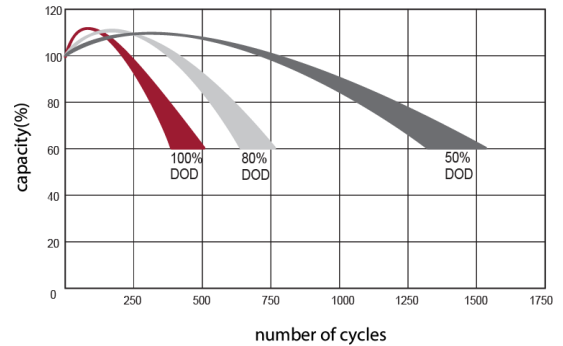
## CONSTANT POWER DISCHARGE CHARACTERISTICS (W/cell at 25°C)

Voltage/Time	30MIN	1HR	2HR	3HR	4HR	5HR	8HR	10HR	20HR
1.60V	5270	3445	2139	1616	1308	1091	742,9	622,1	324,1
1.65V	5165	3346	2081	1573	1277	1067	736,1	615,4	320,6
1.70V	4986	3257	2024	1537	1247	1043	726,3	606,9	316,2
1.75V	4815	3157	1962	1497	1220	1020	717,7	599,7	312,4
1.80V	4648	3054	1901	1457	1189	997,0	707,1	592,8	308,8
1.85V	4043	2756	1752	1353	1109	932,8	665,4	558,9	291,2

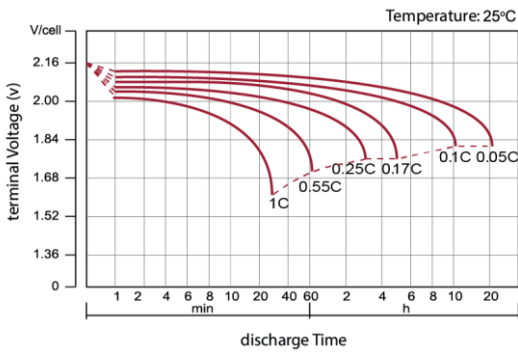
EFFECT OF TEMPERATURE ON LONG TERM LIFE



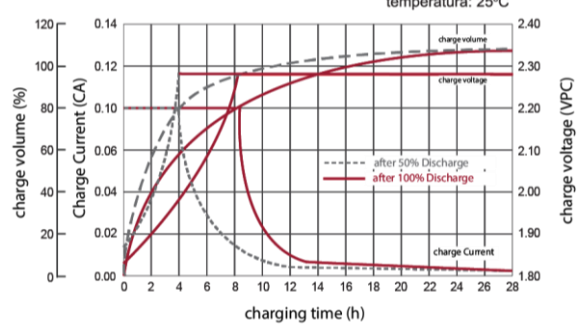
CYCLE LIFE IN RELATION TO DEPTH OF DISCHARGE



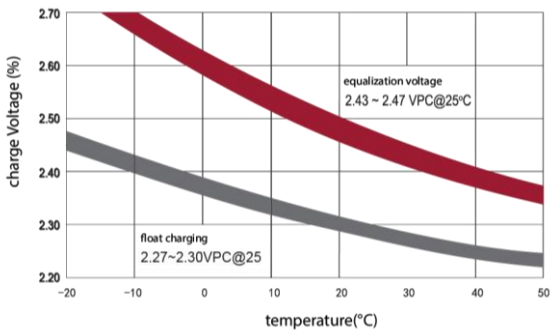
DISCHARGE CHARACTERISTICS CURVE



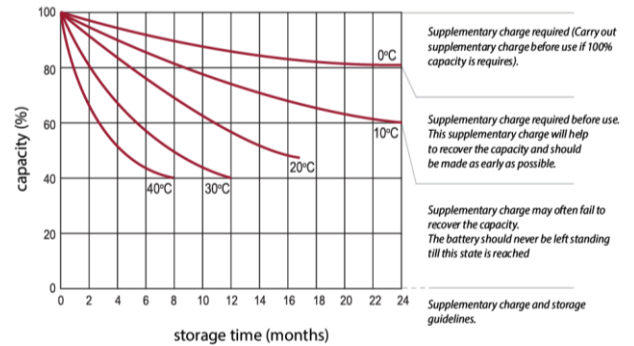
CHARGE CHARACTERISTIC CURVE FOR CYCLE USE



RELATIONSHIP BETWEEN CHARGING VOLTAGE AND TEMPERATURE



STORAGE CHARACTERISTICS



**Standards met:**

PN-EN 60896-21:2007 • PN-EN 60896-22:2007 • PN-EN 61056-1:2013 • PN-EN 61056-2:2013 • PN-E-83016:1999

Batteries manufactured in compliance with: ISO 9001 • ISO 14001

					> 12 Years Life Expect. EUROBAT icon"/>

All data contained in this document, are subject to change. Wamtechnik Sp. z o.o. reserves the right to change them without prior notice.