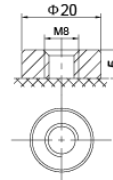
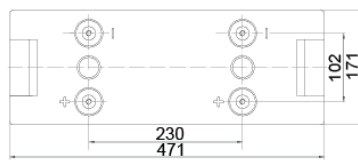
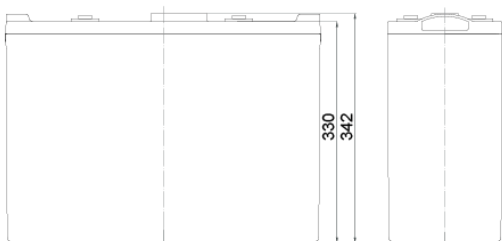




# SBL 1200-2i

Nominal voltage	2 V
Nominal capacity	1200 Ah @ C10 to 1,80 V/cell
Technology	AGM (Absorbent Glass Mat) VRLA (Valve Regulated Lead Acid)
Weight	~ 60 kg
Design life time	20 years (standby use) Very Long Life acc. Eurobat
Internal resistance	~ 0,42 mΩ (full charged)

Operating temperature range	Discharge -20°C ~ +60°C
	Charge 0°C ~ +50°C
	Storage -20°C ~ +60°C
Max. discharge current	4000 (5 sec)
Short circuit current	7830 A
Max. charging current	240 A
Charging voltage	Standby use 2,27 ~ 2,30 VDC
	Cycle use 2,43 ~ 2,47 VDC
Self discharge	Monthly is less than 3% at 25°C
Container material	ABS UL94HB (optional UL94-V0)



Length	471 ±2 mm
Width	171 ±2 mm
Height	330 ±2 mm
Total height	342 ±2 mm
Terminal type	Internal thread M8 (breaking torque 10-12 Nm)

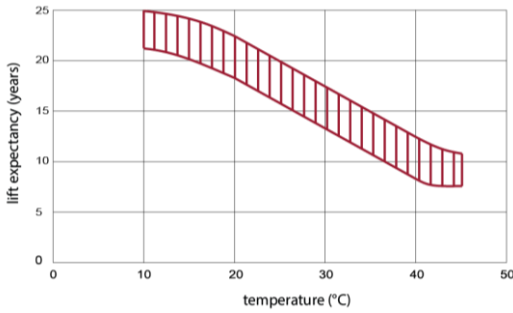
## CONSTANT CURRENT DISCHARGE CHARACTERISTICS (A at 25°C)

Voltage/Time	30MIN	1HR	2HR	3HR	4HR	5HR	8HR	10HR	20HR
1.60V	1161	733,2	451,5	338,5	272,5	226,4	152,1	126,6	66,0
1.65V	1114	708,1	437,1	328,0	265,1	220,5	150,4	125,1	65,2
1.70V	1065	685,0	422,7	319,1	257,9	214,8	148,1	123,2	64,2
1.75V	1018	660,0	407,9	309,6	251,3	209,4	146,1	121,5	63,3
1.80V	972,9	634,7	393,3	300,0	244,0	204,0	143,6	120,0	62,5
1.85V	837,9	569,3	360,4	277,3	226,8	190,2	134,8	113,0	58,9

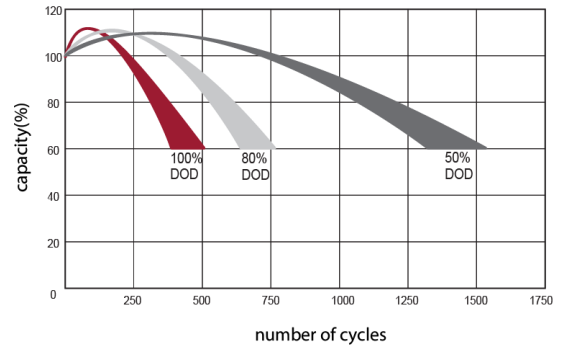
## CONSTANT POWER DISCHARGE CHARACTERISTICS (W/cell at 25°C)

Voltage/Time	30MIN	1HR	2HR	3HR	4HR	5HR	8HR	10HR	20HR
1.60V	2108	1378	855,8	646,5	523,1	436,4	297,1	248,9	129,7
1.65V	2045	1338	832,5	629,1	510,8	426,7	294,4	246,2	128,3
1.70V	1974	1303	809,5	614,8	498,8	417,0	290,5	242,8	126,5
1.75V	1906	1263	784,8	598,9	487,9	407,9	287,1	239,9	125,0
1.80V	1841	1222	760,5	582,7	475,6	398,8	282,8	237,1	123,5
1.85V	1601	1102	700,6	541,1	443,7	373,1	266,1	223,5	116,5

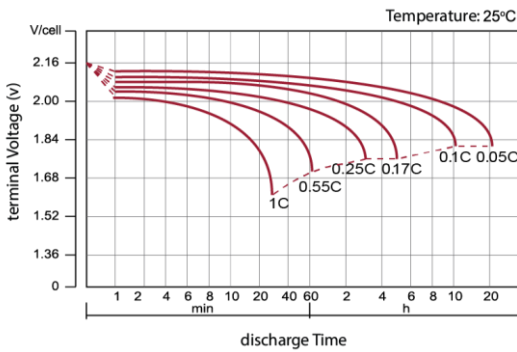
EFFECT OF TEMPERATURE ON LONG TERM LIFE



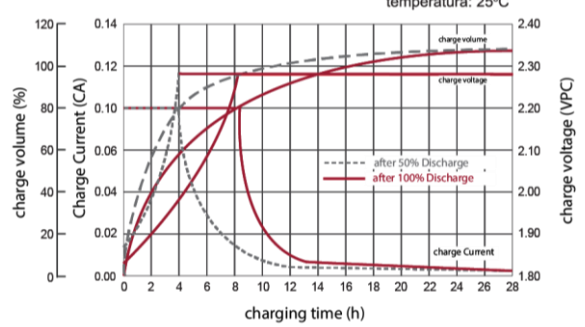
CYCLE LIFE IN RELATION TO DEPTH OF DISCHARGE



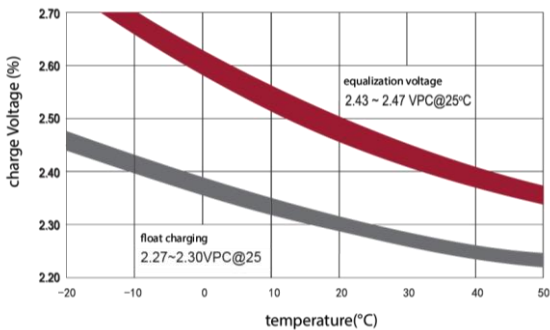
DISCHARGE CHARACTERISTICS CURVE



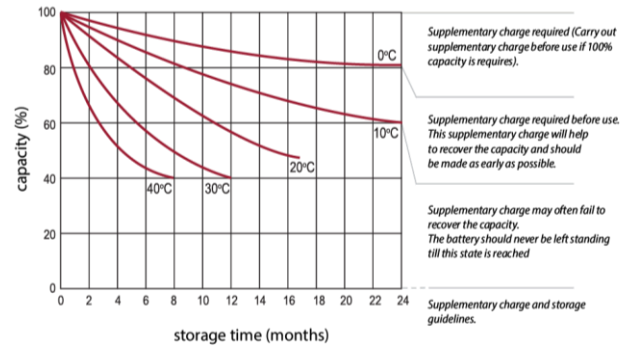
CHARGE CHARACTERISTIC CURVE FOR CYCLE USE



RELATIONSHIP BETWEEN CHARGING VOLTAGE AND TEMPERATURE



STORAGE CHARACTERISTICS



**Standards met:**

PN-EN 60896-21:2007 • PN-EN 60896-22:2007 • PN-EN 61056-1:2013 • PN-EN 61056-2:2013 • PN-E-83016:1999

Batteries manufactured in compliance with: ISO 9001 • ISO 14001


All data contained in this document, are subject to change. Wamtechnik Sp. z o.o. reserves the right to change them without prior notice.