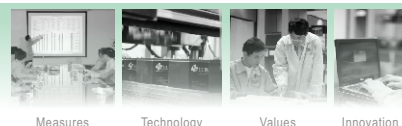




## VRLA Rechargeable Battery

# BPS65-12



Measures

Technology

Values

Innovation

## FEATURES

- Maintenance free(no water topping-up required)
- No free acid(Non-spillable battery)
- Can be used in any orientation(excluding used inverted)
- Carry handles for easy installation
- Absorbent Glass Mat technology for efficient gas recombination
- Its design life is more than 12 years in 20°C

## APPLICATION

- UPS
- Golf-Carts
- Telecom



## SPECIFICATIONS

Nominal Voltage	12V	
Nominal Capacity	20 Hour Rate (3.25A, 10.5V)	65.0 Ah
	10 Hour Rate (6.18A, 10.5V)	61.8 Ah
	5 Hour Rate (11.05A, 10.5V)	55.3 Ah
	1 Hour Rate (39.00A, 9.3V)	39.0 Ah
Approx. Weight	22.4Kg(49.38lbs.)	
Terminals	B5 (Fitting M6 bolt & nut) I2 is optional	
Max. Discharge Current	650 A (5 sec.)	
Max. Charge Current	19.5 A	
Operating Temperature Range	Charge	0°C~40°C(32°F~104°F)
	Discharge	-20°C~50°C(-4°F~122°F)
	Storage	-20°C~40°C(-4°F~104°F)
Self Discharge	< 3% per month (25°C)	
Internal Resistance	≤ 5mΩ (Fully Charged )	

## CONTAINER MATERIAL

- Standard: ABS( UL 94-HB)  
Model Name: BPS65-12
- Optional: Flame Retardant ABS(UL 94-V0)  
Model Name: BPS65-12FR

Certificate as below:

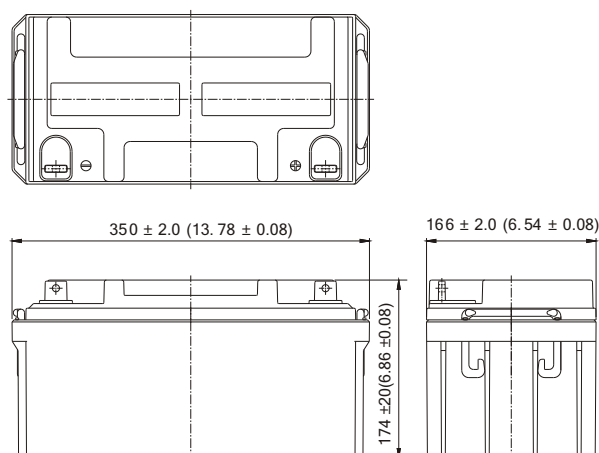


Compliance of the standards as below:

- IEC 61056-1
- JIS C 8702-1
- GB/T 19639.1

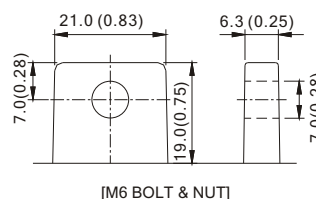
## OUTER DIMENSIONS mm(inch)

Length (L)	Width (W)	Container Height (H)	Total Height (TH)
350±2.0(13.78±0.08)	166±2.0(6.54±0.08)	174±2.0(6.85±0.08)	174±2.0(6.85±0.08)

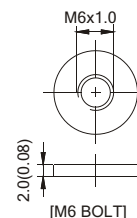


## TERMINAL TYPE

● Terminal B5



● Terminal I2



Terminal Hardware Initial Torque: B5,I2(5.5Nm±5%)