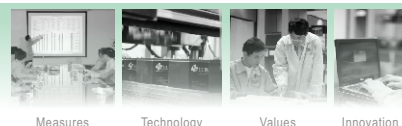




VRLA Rechargeable Battery

BPS28-12 D



Measures

Technology

Values

Innovation

FEATURES

- Maintenance free(no water topping-up required)
- No free acid(Non-spillable battery)
- Can be used in any orientation(excluding used inverted)
- Absorbent Glass Mat technology for efficient gas recombination
- Its design life is more than 12 years in 20°C

APPLICATION

- UPS
- Medical Equipment
- Utility switching
- Emergency power
- Security Systems

SPECIFICATIONS

Nominal Voltage	12V	
Nominal Capacity	20 Hour Rate (1400mA, 10.5V)	28.0 Ah
	10 Hour Rate (2660mA, 10.5V)	26.6 Ah
	5 Hour Rate (4760mA, 10.5V)	23.8 Ah
	1 Hour Rate (16800mA, 9.3V)	16.8 Ah
Approx. Weight	9120g(20.11lbs.)	
Terminals	TP (Fitting M5 post), I1(Fitting M5 bolt) is optional	
Max. Discharge Current	420 A (5 sec.)	
Max. Charge Current	8.4 A	
Operating Temperature Range	Charge	0°C~40°C(32°F~104°F)
	Discharge	-20°C~50°C(-4°F~122°F)
	Storage	-20°C~40°C(-4°F~104°F)
Self Discharge	< 3% per month (25°C)	
Internal Resistance	$\leq 11m\Omega$ (Fully Charged)	



Terminal TP



Terminal I1

CONTAINER MATERIAL

- Standard: ABS(UL 94-HB)
Model Name: BPS28-12 D
- Optional: Flame Retardant ABS (UL 94-V0)
Model Name: BPS28-12FR D

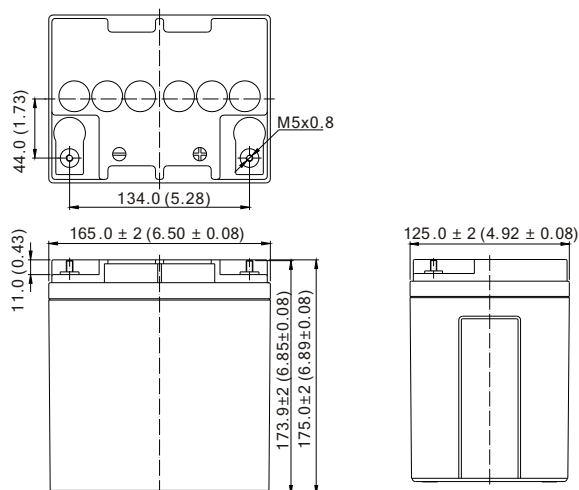
Certificate as below:



Compliance of the standards as below:

- IEC 61056-1
- JIS C 8702-1
- GB/T 19639.1

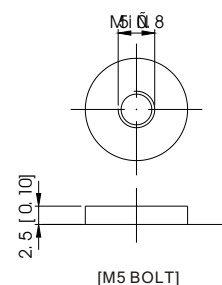
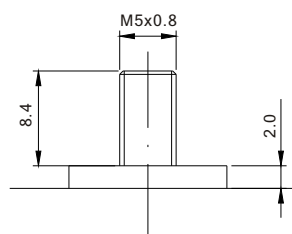
OUTER DIMENSIONS mm(inch)



TERMINAL TYPE

● Terminal TP

● Terminal I1



Terminal Hardware Initial Torque: 4.0Nm±5%