

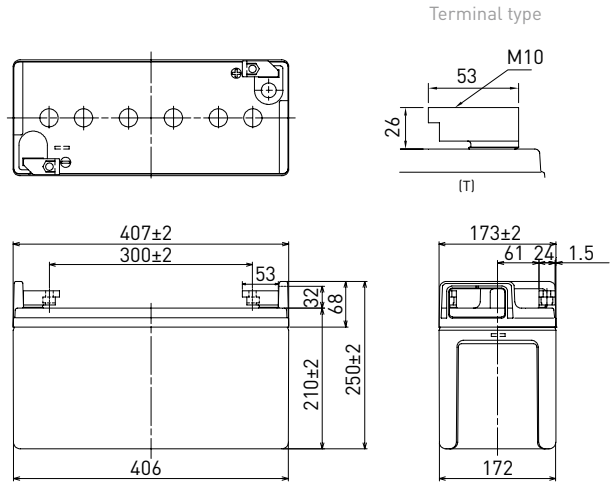
# LC-P06200TA

FOR STANDBY POWER SUPPLIES.  
 EXPECTED TRICKLE DESIGN LIFE: 10 – 12 YEARS AT 20°C  
 ACCORDING TO EUROBAT.

## DIMENSIONS (MM)

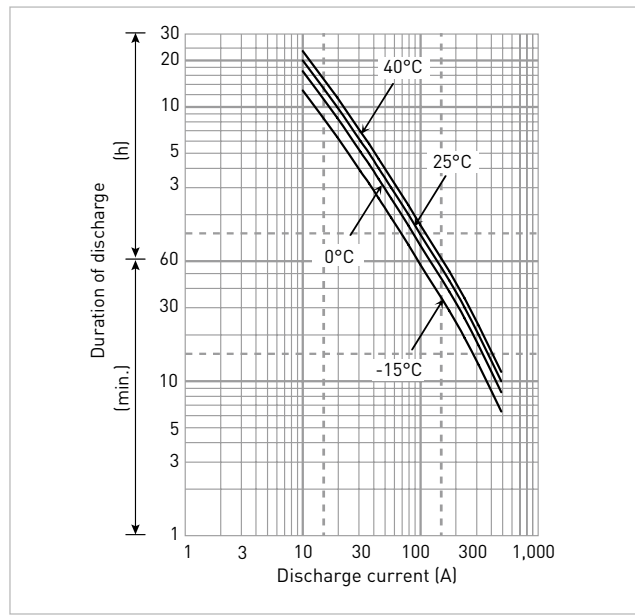


Contents indicated (including the recycle marking, etc.) are subject to change without notice. Battery case resin: flame-retardant (UL94 V-0)



Specifications		LC-P06200TA
<b>Nominal voltage (V)</b>		6
<b>Nominal capacity</b>	<b>20 hours rate (Ah)</b>	200
<b>Dimensions</b>	<b>Length (mm)</b>	173
	<b>Width (mm)</b>	407
	<b>Total height (mm)</b>	250
<b>Approx. mass (kg)</b>		33.5
<b>Terminal type</b>		M10 T-shape
<b>Capacity (25°C)</b>	<b>20 hours rate (Ah)</b>	200
	<b>10 hours rate (Ah)</b>	195
	<b>3 hours rate (Ah)</b>	166
	<b>1 hour rate (Ah)</b>	120
<b>Impedance (mΩ)</b>	<b>Fully charged battery (25°C)</b>	2
	<b>Temperature dependency of capacity (%) – 20 hours rate</b>	
	40°C	102
	25°C	100
	0°C	85
	-15°C	65
<b>Remaining capacity (25°C)</b>	<b>After 3 months (%)</b>	91
	<b>After 6 months (%)</b>	82
	<b>After 12 months (%)</b>	64

## DURATION OF DISCHARGE VS. DISCHARGE CURRENT



## WATT TABLE (25°C)

(Wattage/battery)

Cut-off	5min.	10min.	15min.	20min.	30min.	45min.	1h	1.5h	2h	3h	4h	5h	6h	10h	20h
4.80V	2,786	2,306	1,892	1,592	1,206	892	721	525	434	296	225	183	154	93.2	47.0
4.95V	2,737	2,254	1,847	1,554	1,177	885	702	511	423	291	220	178	149	90.0	46.7
5.10V	2,565	2,204	1,781	1,498	1,139	877	683	497	417	286	215	173	145	88.9	46.1
5.25V	2,298	2,134	1,759	1,487	1,130	852	664	483	408	281	213	170	143	87.9	45.8
5.40V	2,031	1,947	1,676	1,479	1,094	840	655	476	399	275	208	167	140	86.8	45.5

## AMPERE TABLE (25°C)

(Ampere/battery)

Cut-off	5min.	10min.	15min.	20min.	30min.	45min.	1h	1.5h	2h	3h	4h	5h	6h	10h	20h
4.80V	591	485	384	318	241	179	135	99.0	81.8	57.9	44.9	37.8	31.2	19.8	10.3
4.95V	530	480	382	316	239	174	130	97.1	81.2	56.8	44.5	37.2	31.1	19.7	10.2
5.10V	468	467	380	312	235	173	125	96.3	80.2	56.4	44.1	36.6	31.0	19.6	10.1
5.25V	408	433	359	298	231	172	120	95.2	79.2	55.2	43.6	36.4	30.5	19.5	10.0
5.40V	357	379	348	290	228	148	115	85.7	75.2	53.9	43.0	36.2	30.0	19.4	9.80

All mentioned values are average values

# LC-P06200TA

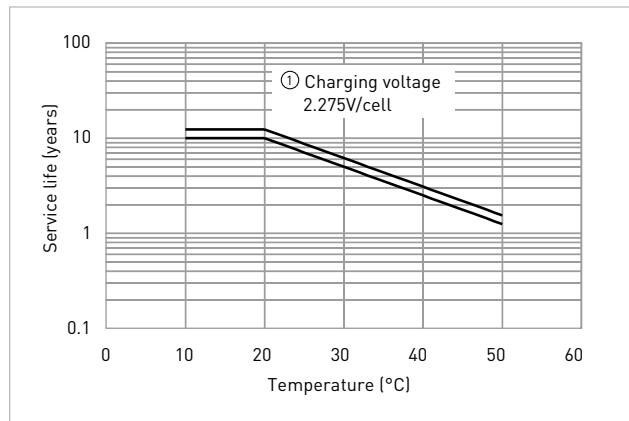
## CHARGING METHOD (25°C)

<b>Cycle use</b>	Control voltage: 6.8V - 6.9V Initial current: 30.0A or smaller
------------------	---

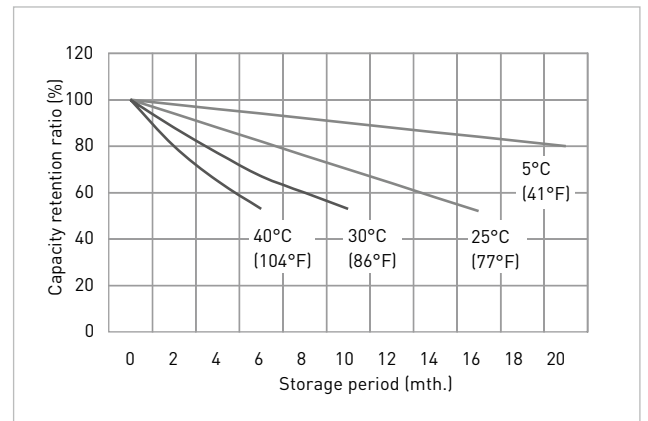
## CUT-OFF VOLTAGE

<b>Discharge current</b>	10.0A - 40.0A	40.0A - 100A	100A - 200A	200A - 400A	400A - 600A
<b>Cut-off voltage</b>	5.25V	5.10V	4.95V	4.65V	4.35V

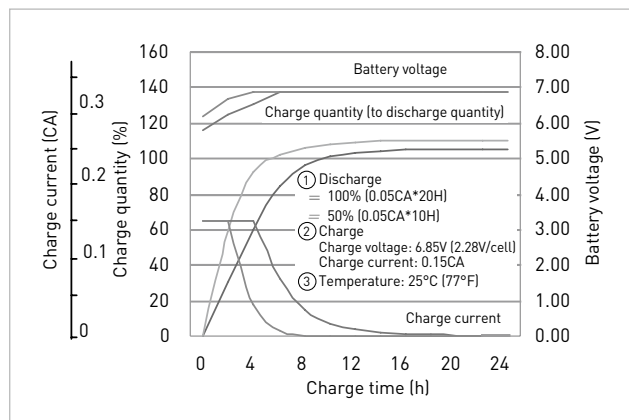
## INFLUENCE OF TEMPERATURE ON TRICKLE LIFE



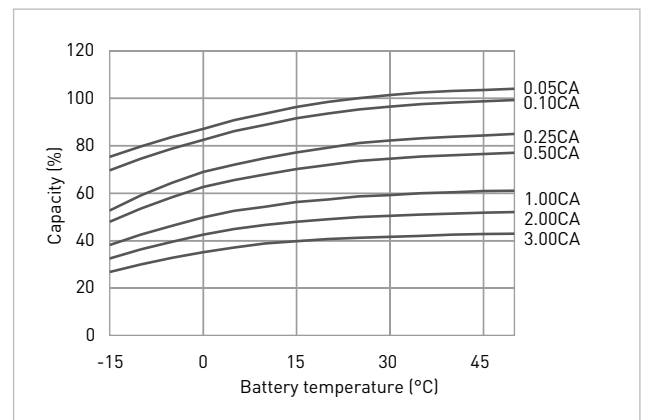
## RESIDUAL CAPACITY TEST RESULT



## CONSTANT-VOLTAGE CONSTANT-CURRENT CHARGE CHARACTERISTICS FOR TRICKLE USE



## DISCHARGE CAPACITY BY TEMPERATURE AND BY DISCHARGE CURRENT



## DISCHARGE CHARACTERISTICS

