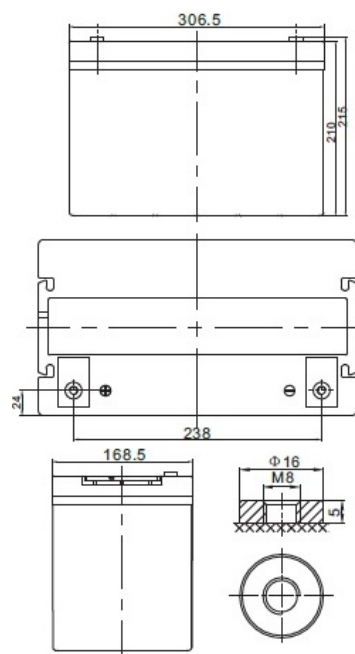


SBL 115-12HR

(12V 2803W)



Nominal voltage	12 V	
Nominal capacity	2803 W / 10min to 1,67 V/cell 100 Ah @ C20 to 1,75 V/cell	
Dimensions	Length	306,5 mm
	Width	168,5 mm
	Height / Total height	210 / 215 mm
Weight	~ 31,5 kg	
Technology	VRLA (Valve Regulated Lead Acid) AGM (Absorbent Glass Mat)	
Design life time	15 years (standby use)	
Internal resistance	~ 5,0 mΩ (full charged)	
Operating temperature range	Discharge	-20°C ~ +60°C
	Charge	0°C ~ +50°C
	Storage	-20°C ~ +60°C
Maximum discharge current	1 000 A (5 sec.)	
Short circuit current	2 250 A	
Recommended maximum charging current	30,0 A	
Charging voltage	Standby use	13,6 ~ 13,8 VDC
	Cycle use	14,6 ~ 14,8 VDC
Self discharge	Monthly is less than 3% at 25°C	
Container material	ABS UL94HB (optional UL94-V0)	
Terminal types	Internal thread M8 (breaking torque 10-12 Nm)	



CONSTANT CURRENT DISCHARGE CHARACTERISTICS (A at 25°C)

Voltage / Time	5 min	8 min	10 min	15 min	20 min	30 min	60 min	90 min
9.6 V	344,61	298,15	270,89	216,93	174,26	127,73	73,43	54,39
10.0 V	318,87	279,68	254,17	205,63	162,55	121,77	69,98	51,78
10.2 V	305,62	269,84	244,98	199,29	156,35	118,32	67,97	50,22
10.5 V	288,65	256,35	230,04	189,95	152,07	114,98	66,85	49,10
10.8 V	271,50	242,86	215,00	180,45	147,57	111,46	65,53	47,91
11.1 V	253,36	228,35	199,33	170,17	142,42	107,34	63,96	46,47

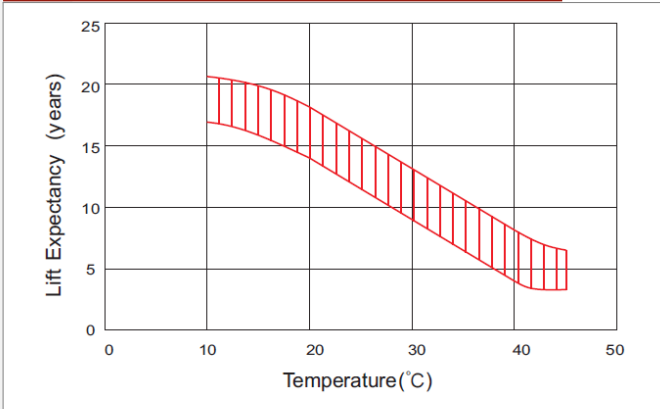
CONSTANT POWER DISCHARGE CHARACTERISTICS (W at 25°C)

Voltage / Time	5 min	8 min	10 min	15 min	20 min	30 min	60 min	90 min
9.6 V	3687,6	3237,0	2958,9	2383,7	1921,8	1411,8	814,9	605,8
10.0 V	3445,2	3066,0	2803,2	2281,5	1810,1	1359,0	784,1	582,4
10.2 V	3341,4	2993,6	2733,9	2237,3	1761,6	1336,0	770,6	571,6
10.5 V	3195,6	2880,2	2599,5	2159,4	1735,1	1314,8	767,5	565,8
10.8 V	3048,8	2767,8	2465,2	2081,0	1708,0	1293,0	763,2	560,1
11.1 V	2903,0	2655,4	2331,5	2002,5	1682,0	1270,6	760,1	554,4

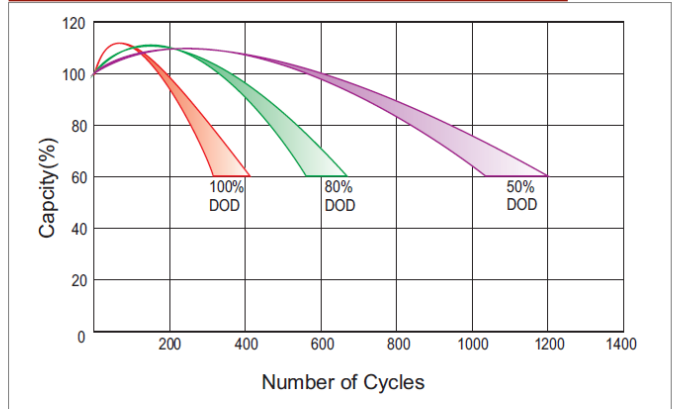
According with:

PN-EN 60896-21:2007	ISO 9001
PN-EN 60896-22:2007	ISO 14001
PN-EN 61056-1:2013	
PN-EN 61056-2:2013	
PN-E-83016:1999	

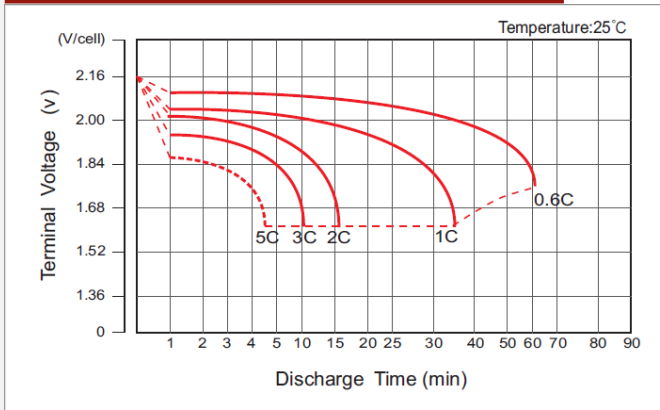
EFFECT OF TEMPERATURE ON LONG TERM LIFE



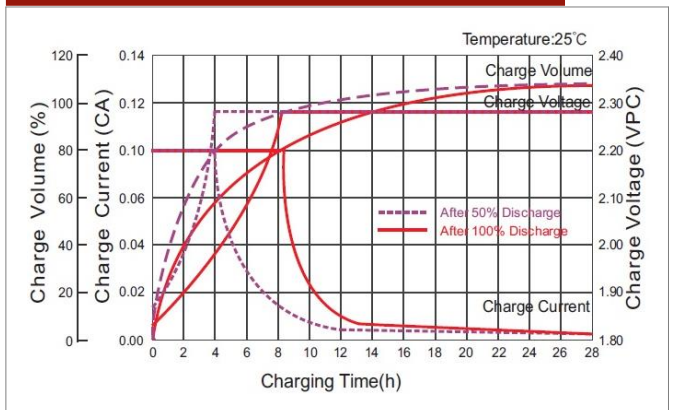
CYCLE LIFE IN RELATION TO DEPTH OF DISCHARGE



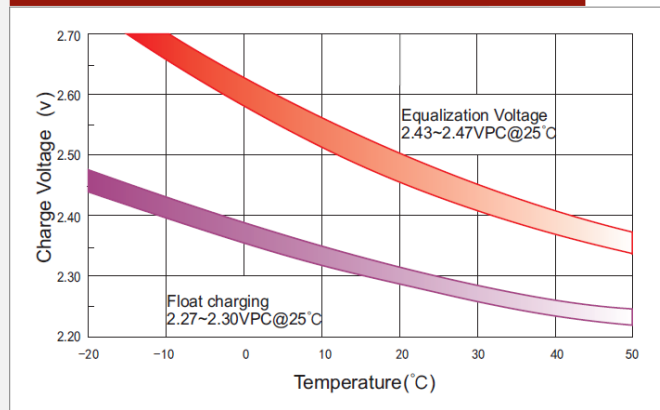
DISCHARGE CHARACTERISTICS



CHARGE CHARACTERISTIC FOR STANDBY USE



RELATIONSHIP BETWEEN CHARGING VOLTAGE AND TEMPERATURE



STORAGE CHARACTERISTICS

