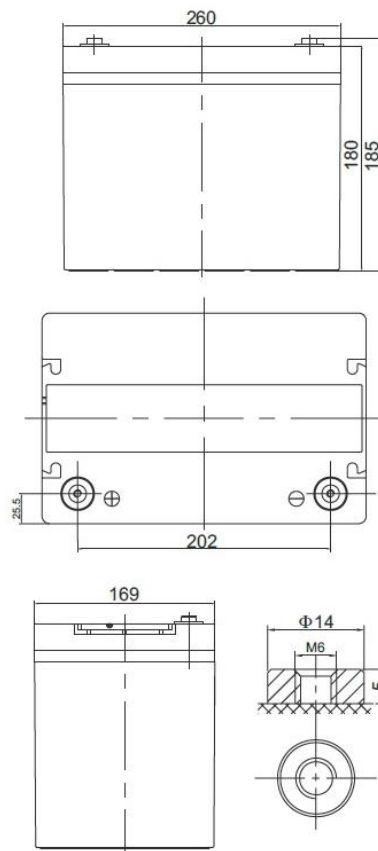


Nominal voltage	12 V	
Nominal capacity	60,0 Ah @ C20 to 1,75 V/cell	
Dimensions	Length	260 mm
	Width	169 mm
	Height / Total height	180 / 185 mm
Weight	~ 20,0 kg	
Technology	VRLA (Valve Regulated Lead Acid) AGM (Absorbent Glass Mat)	
Design life time	up to 12 years (standby use)	
Internal resistance	~ 5,5 mΩ (full charged)	
Operating temperature range	Discharge	-20°C ~ +60°C
	Charge	0°C ~ +50°C
	Storage	-20°C ~ +60°C
Maximum discharge current	600 A (5 sec.)	
Recommended maximum charging current	18,0 A	
Charging voltage	Standby use	13,6 ~ 13,8 VDC
	Cycle use	14,6 ~ 14,8 VDC
Self discharge	Monthly is less than 3% at 25°C	
Container material	ABS UL94HB (optional UL94-V0)	
Terminal types	Internal thread M6 (breaking torque 8-10Nm)	



CONSTANT CURRENT DISCHARGE CHARACTERISTICS (A at 25°C)

Napięcie / czas	5 min	10 min	15 min	30 min	1 h	2 h	3 h	4 h	5 h	8 h	10 h	20 h
9.6 V	201,82	152,30	114,58	67,02	37,03	21,863	16,940	13,314	11,331	7,615	6,330	3,311
10.0 V	194,53	143,91	109,54	64,34	35,76	21,166	16,417	12,954	11,037	7,530	6,253	3,259
10.2 V	185,05	132,49	102,60	61,50	34,59	20,468	15,971	12,601	10,750	7,413	6,158	3,219
10.5 V	172,86	121,27	95,48	58,78	33,33	19,753	15,494	12,279	10,480	7,311	6,077	3,180
10.8 V	157,50	109,78	88,16	56,18	32,05	19,046	15,015	11,926	10,209	7,186	6,000	3,148
11.1 V	138,60	89,72	73,16	48,39	28,75	17,451	13,881	11,085	9,521	6,747	5,648	2,989

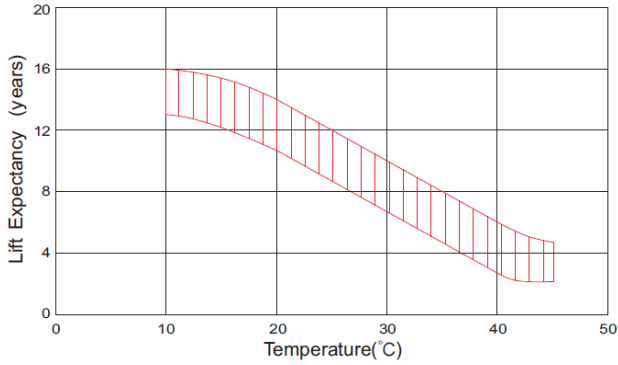
CONSTANT POWER DISCHARGE CHARACTERISTICS (W at 25°C)

Napięcie / czas	5 min	10 min	15 min	30 min	1 h	2 h	3 h	4 h	5 h	8 h	10 h	20 h
9.6 V	2084,31	1553,26	1201,86	730,37	417,47	248,62	194,13	153,36	131,05	89,23	74,66	39,12
10.0 V	2062,31	1496,06	1166,06	708,54	405,48	241,86	188,93	149,77	128,13	88,41	73,85	38,56
10.2 V	1983,65	1402,58	1108,46	684,04	394,74	235,18	184,61	146,25	125,23	87,25	72,83	38,13
10.5 V	1886,45	1307,00	1046,51	660,53	382,61	228,02	179,86	143,05	122,50	86,21	71,96	37,71
10.8 V	1748,72	1203,74	979,97	637,70	370,11	220,96	174,98	139,44	119,76	84,93	71,13	37,39
11.1 V	1566,25	1001,27	824,74	554,69	333,99	203,56	162,49	130,10	112,05	79,92	67,06	35,55

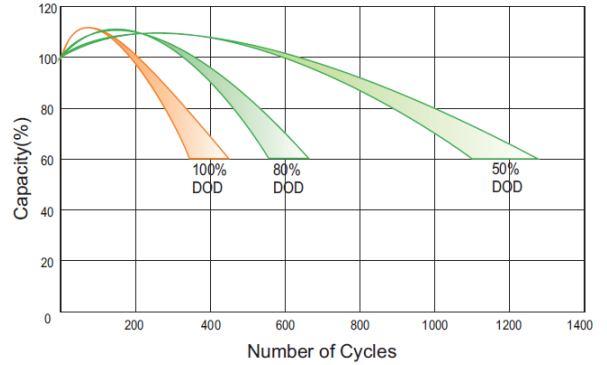
ACCORDING WITH:

PN-EN 60896-21:2007	ISO 9001
PN-EN 60896-22:2007	ISO 14001
PN-EN 61056-1:2013	
PN-EN 61056-2:2013	
PN-E-83016:1999	

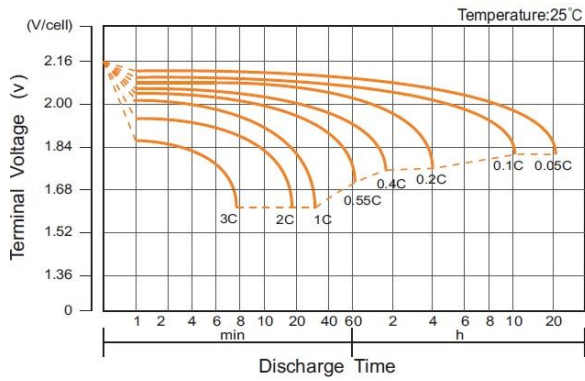
EFFECT OF TEMPERATURE ON LONG TERM LIFE



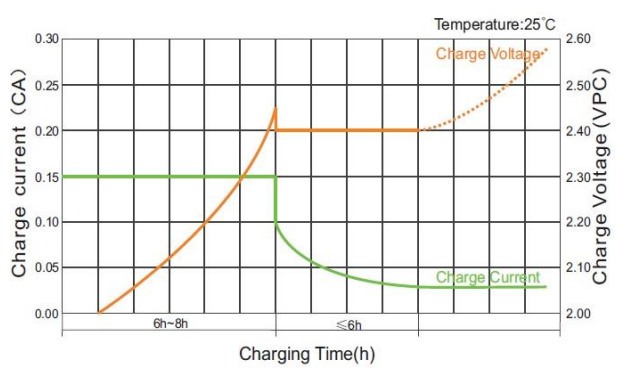
CYCLE LIFE IN RELATION TO DEPTH OF DISCHARGE



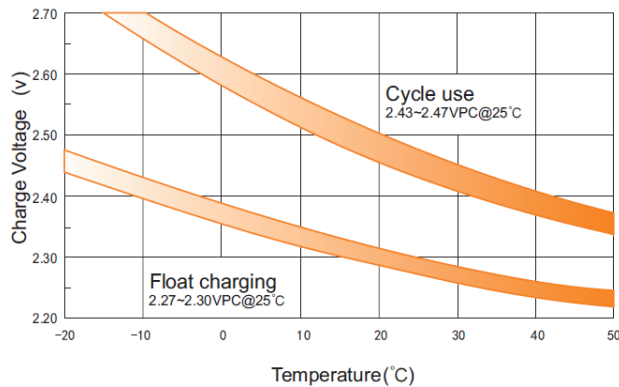
DISCHARGE CHARACTERISTICS



CHARGE CHARACTERISTIC FOR CYCLE USE



RELATIONSHIP BETWEEN CHARGING VOLTAGE AND TEMPERATURE



STORAGE CHARACTERISTICS

