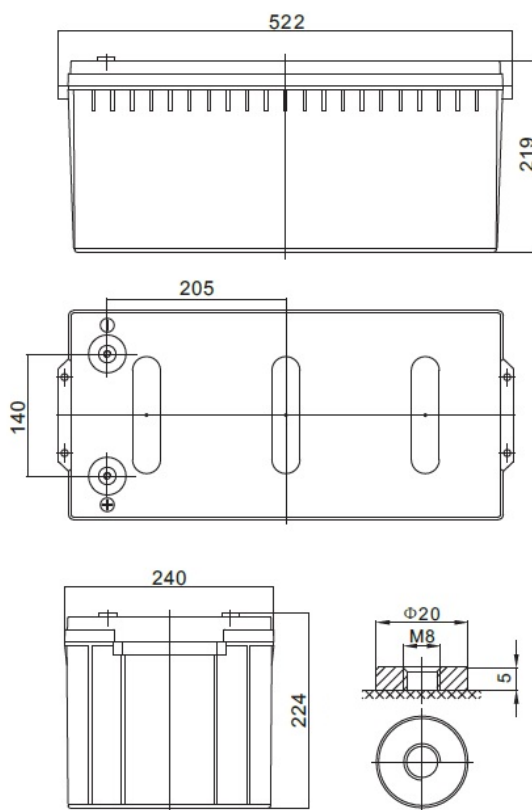


<b>Nominal voltage</b>	12 V	
<b>Nominal capacity</b>	225,0 Ah @ C20 to 1,75 V/cell	
<b>Dimensions</b>	<b>Length</b>	522 mm
	<b>Width</b>	240 mm
	<b>Height / Total height</b>	219 / 224 mm
<b>Weight</b>	~ 65,0 kg	
<b>Technology</b>	VRLA (Valve Regulated Lead Acid) AGM (Absorbent Glass Mat)	
<b>Design life time</b>	up to 12 years (standby use)	
<b>Internal resistance</b>	~ 3,2 mΩ (full charged)	
<b>Operating temperature range</b>	<b>Discharge</b>	-20°C ~ +60°C
	<b>Charge</b>	0°C ~ +50°C
	<b>Storage</b>	-20°C ~ +60°C
<b>Maximum discharge current</b>	2250 A (5 sec.)	
<b>Recommended maximum charging current</b>	67,5 A	
<b>Charging voltage</b>	<b>Standby use</b>	13,6 ~ 13,8 VDC
	<b>Cycle use</b>	14,6 ~ 14,8 VDC
<b>Self discharge</b>	Monthly is less than 3% at 25°C	
<b>Container material</b>	ABS UL94HB (optional UL94-V0)	
<b>Terminal types</b>	Internal thread M8 (breaking torque 10-12 Nm)	



### CONSTANT CURRENT DISCHARGE CHARACTERISTICS (A at 25°C)

Napięcie / czas	15 min	30 min	1 h	2 h	3 h	4 h	5 h	8 h	10 h	20 h
9.6 V	394,5	242,6	136,7	81,4	63,4	49,7	42,3	27,1	22,5	11,79
10.0 V	368,9	229,8	132,0	78,7	61,4	48,2	41,0	26,9	22,3	11,61
10.2 V	347,0	217,9	127,8	76,6	58,8	46,8	39,9	26,5	21,9	11,47
10.5 V	325,0	209,3	123,8	73,6	57,3	45,5	38,8	26,1	21,6	11,25
10.8 V	297,6	201,6	118,3	71,1	56,3	44,4	38,3	25,6	21,4	11,14
11.1 V	246,2	170,9	105,6	65,0	52,4	41,7	35,2	24,1	20,1	11,04

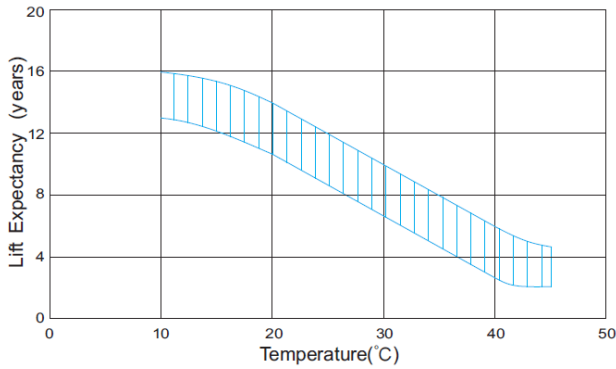
### CONSTANT POWER DISCHARGE CHARACTERISTICS (W at 25°C)

Napięcie / czas	15 min	30 min	1 h	2 h	3 h	4 h	5 h	8 h	10 h	20 h
9.6 V	4129,1	2644,7	1539,3	923,2	722,2	575,0	480,4	317,2	264,8	139,7
10.0 V	4014,7	2582,8	1512,9	898,3	704,2	561,0	467,4	314,7	262,2	138,4
10.2 V	3800,1	2458,4	1468,5	875,9	677,2	543,2	455,7	310,9	257,1	137,2
10.5 V	3586,6	2372,4	1427,9	844,7	660,5	530,4	445,3	305,8	254,6	134,7
10.8 V	3315,6	2295,6	1369,5	825,6	656,8	520,2	439,3	300,7	252,0	133,4
11.1 V	2785,6	1968,8	1229,9	760,1	612,7	489,6	406,4	284,2	238,0	132,2

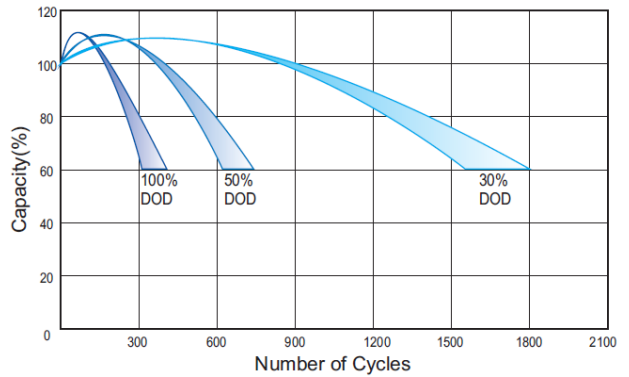
### ACCORDING WITH:

PN-EN 60896-21:2007	ISO 9001
PN-EN 60896-22:2007	ISO 14001
PN-EN 61056-1:2013	
PN-EN 61056-2:2013	
PN-E-83016:1999	

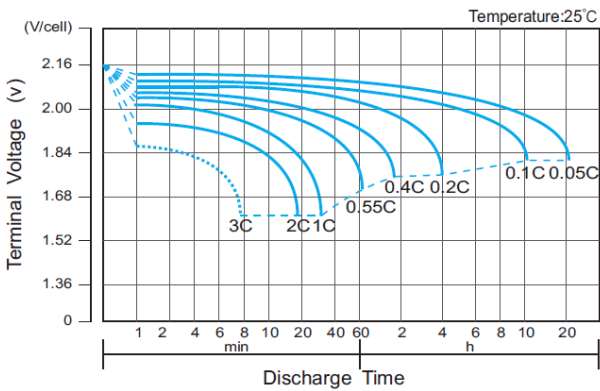
### EFFECT OF TEMPERATURE ON LONG TERM LIFE



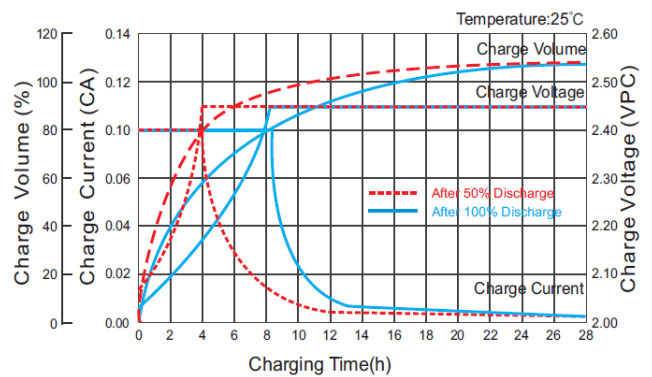
### CYCLE LIFE IN RELATION TO DEPTH OF DISCHARGE



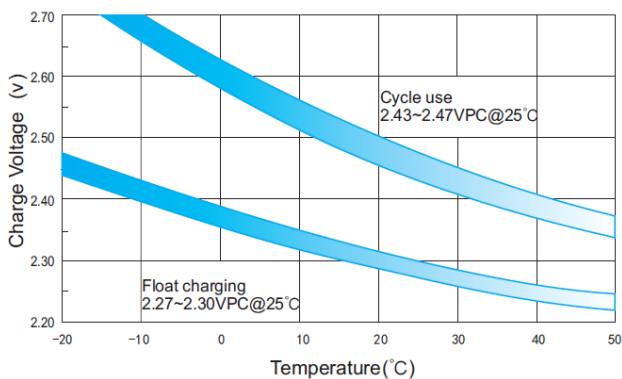
### DISCHARGE CHARACTERISTICS



### CHARGE CHARACTERISTIC FOR CYCLE USE



### RELATIONSHIP BETWEEN CHARGING VOLTAGE AND TEMPERATURE



### STORAGE CHARACTERISTICS

