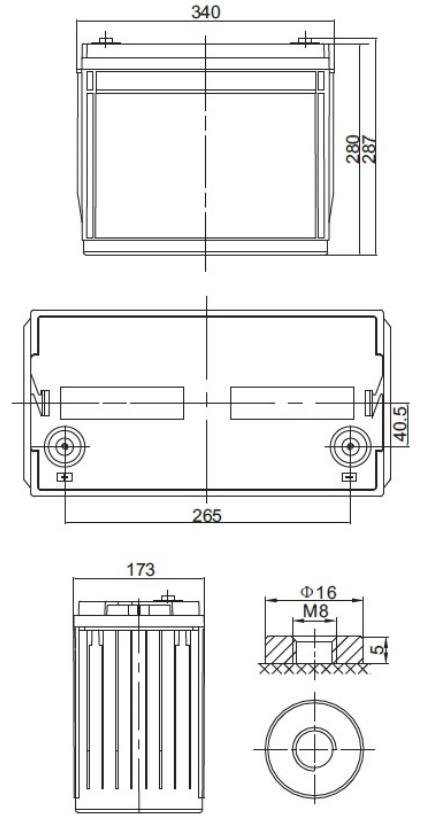


<b>Nominal voltage</b>	12 V	
<b>Nominal capacity</b>	134,0 Ah @ C20 to 1,75 V/cell	
<b>Dimensions</b>	<b>Length</b>	340 mm
	<b>Width</b>	173 mm
	<b>Height / Total height</b>	280 / 287 mm
<b>Weight</b>	~ 41,5 kg	
<b>Technology</b>	VRLA (Valve Regulated Lead Acid) AGM (Absorbent Glass Mat)	
<b>Design life time</b>	up to 12 years (standby use)	
<b>Internal resistance</b>	~ 4,4 mΩ (full charged)	
<b>Operating temperature range</b>	<b>Discharge</b>	-20°C ~ +60°C
	<b>Charge</b>	0°C ~ +50°C
	<b>Storage</b>	-20°C ~ +60°C
<b>Maximum discharge current</b>	1340 A (5 sec.)	
<b>Recommended maximum charging current</b>	40,2 A	
<b>Charging voltage</b>	<b>Standby use</b>	13,6 ~ 13,8 VDC
	<b>Cycle use</b>	14,6 ~ 14,8 VDC
<b>Self discharge</b>	Monthly is less than 3% at 25°C	
<b>Container material</b>	ABS UL94HB (optional UL94-V0)	
<b>Terminal types</b>	Internal thread M8 (breaking torque 10-12 Nm)	



### CONSTANT CURRENT DISCHARGE CHARACTERISTICS (A at 25°C)

Napięcie / czas	10 min	15 min	30 min	1 h	2 h	3 h	4 h	5 h	8 h	10 h	20 h
9.6 V	309,1	243,1	145,9	81,4	48,5	37,8	29,6	25,2	16,2	13,4	6,9
10.0 V	284,7	227,4	138,2	78,6	46,8	36,6	28,7	24,4	16,0	13,3	6,9
10.2 V	263,9	213,8	131,1	76,1	45,6	35,1	27,8	23,7	15,8	13,0	6,8
10.5 V	242,1	200,3	125,9	73,7	43,9	34,1	27,1	23,1	15,5	12,9	6,7
10.8 V	220,3	183,4	121,3	70,4	42,4	33,5	26,5	22,8	15,3	12,8	6,64
11.1 V	172,4	151,7	102,8	62,9	38,7	31,2	24,8	21,0	14,4	12,0	6,57

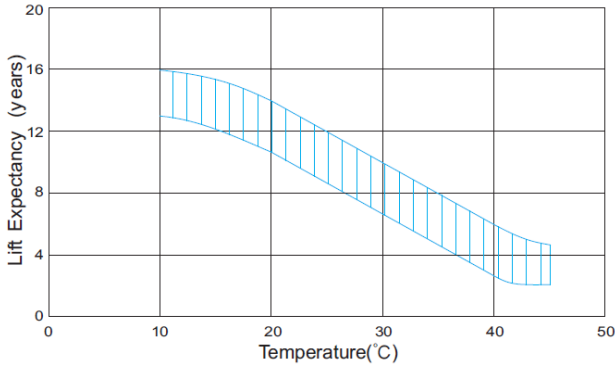
### CONSTANT POWER DISCHARGE CHARACTERISTICS (W at 25°C)

Napięcie / czas	10 min	15 min	30 min	1 h	2 h	3 h	4 h	5 h	8 h	10 h	20 h
9.6 V	3157,8	2544,6	1591,2	916,8	549,8	430,1	342,5	286,1	188,9	157,7	83,2
10.0 V	3040,8	2473,8	1554,0	901,2	535,0	419,4	334,1	278,3	187,4	156,2	82,4
10.2 V	2838,0	2341,8	1479,0	874,8	521,6	403,3	323,5	271,4	185,2	153,1	81,7
10.5 V	2641,2	2210,4	1427,4	850,2	503,1	393,4	315,9	265,2	182,1	151,6	80,2
10.8 V	2433,0	2043,0	1381,2	815,4	491,6	391,2	309,8	261,7	179,1	150,1	79,5
11.1 V	1930,2	1716,6	1184,4	732,6	452,7	364,9	291,6	242,0	169,3	141,8	78,7

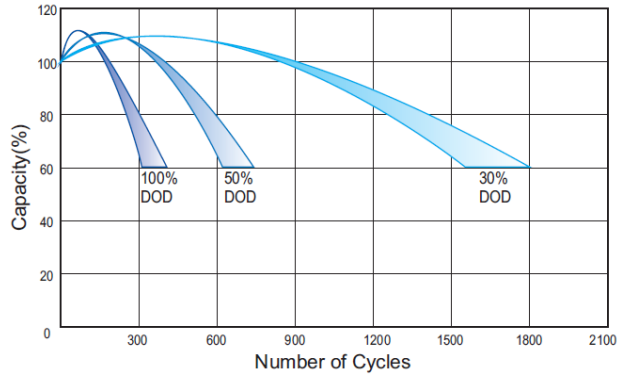
### ACCORDING WITH:

PN-EN 60896-21:2007	ISO 9001
PN-EN 60896-22:2007	ISO 14001
PN-EN 61056-1:2013	
PN-EN 61056-2:2013	
PN-E-83016:1999	

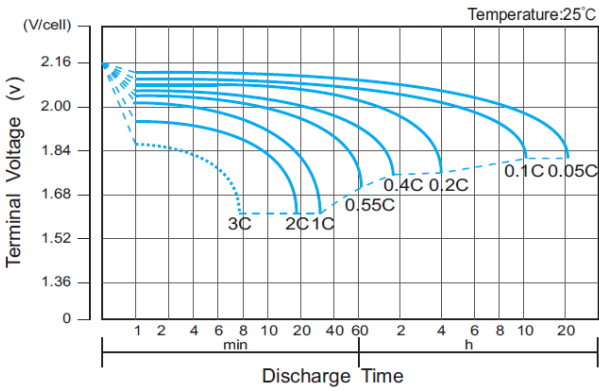
### EFFECT OF TEMPERATURE ON LONG TERM LIFE



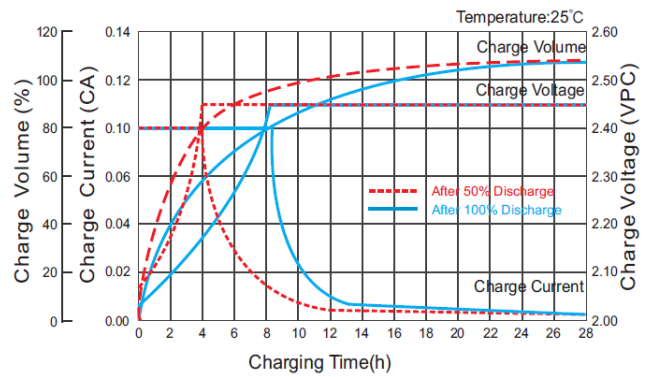
### CYCLE LIFE IN RELATION TO DEPTH OF DISCHARGE



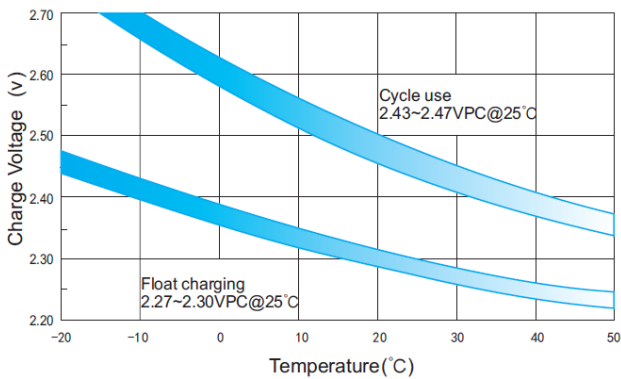
### DISCHARGE CHARACTERISTICS



### CHARGE CHARACTERISTIC FOR CYCLE USE



### RELATIONSHIP BETWEEN CHARGING VOLTAGE AND TEMPERATURE



### STORAGE CHARACTERISTICS

