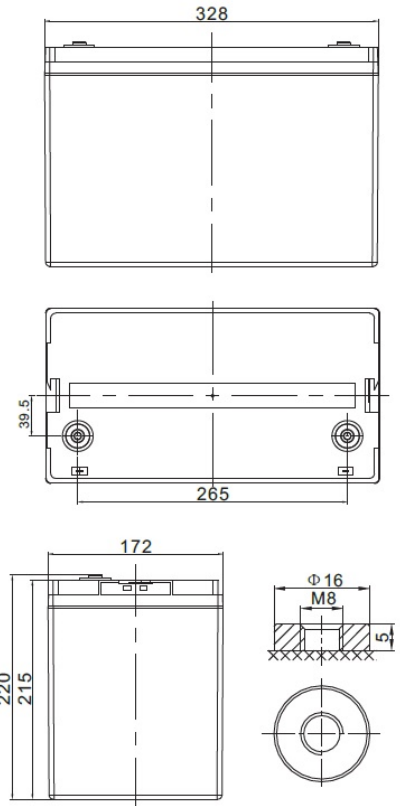


<b>Nominal voltage</b>	12 V	
<b>Nominal capacity</b>	100,0 Ah @ C20 to 1,75 V/cell	
<b>Dimensions</b>	<b>Length</b>	328 mm
	<b>Width</b>	172 mm
	<b>Height / Total height</b>	215 / 220 mm
<b>Weight</b>	~ 30,0 kg	
<b>Technology</b>	VRLA (Valve Regulated Lead Acid) AGM (Absorbent Glass Mat)	
<b>Design life time</b>	up to 12 years (standby use)	
<b>Internal resistance</b>	~ 5,0 mΩ (full charged)	
<b>Operating temperature range</b>	<b>Discharge</b>	-20°C ~ +60°C
	<b>Charge</b>	0°C ~ +50°C
	<b>Storage</b>	-20°C ~ +60°C
<b>Maximum discharge current</b>	1000 A (5 sec.)	
<b>Recommended maximum charging current</b>	30,0 A	
<b>Charging voltage</b>	<b>Standby use</b>	13,6 ~ 13,8 VDC
	<b>Cycle use</b>	14,6 ~ 14,8 VDC
<b>Self discharge</b>	Monthly is less than 3% at 25°C	
<b>Container material</b>	ABS UL94HB (optional UL94-V0)	
<b>Terminal types</b>	Internal thread M8 (breaking torque 10-12 Nm)	



### CONSTANT CURRENT DISCHARGE CHARACTERISTICS (A at 25°C)

Napięcie / czas	10 min	15 min	30 min	1 h	2 h	3 h	4 h	5 h	8 h	10 h	20 h
9.6 V	230,7	184,6	108,9	60,7	36,2	28,2	22,1	18,8	12,1	10,0	5,2
10.0 V	212,5	172,6	103,2	58,7	35,0	27,3	21,4	18,2	12,0	9,9	5,2
10.2 V	196,9	162,3	97,8	56,8	34,0	26,2	20,8	17,7	11,8	9,7	5,1
10.5 V	180,7	152,0	94,0	55,0	32,7	25,5	20,2	17,2	11,6	9,6	5,0
10.8 V	164,4	139,2	90,5	52,6	31,6	25,0	19,7	17,0	11,4	9,5	4,95
11.1 V	128,6	115,2	76,7	46,9	28,9	23,3	18,5	15,6	10,7	9,0	4,91

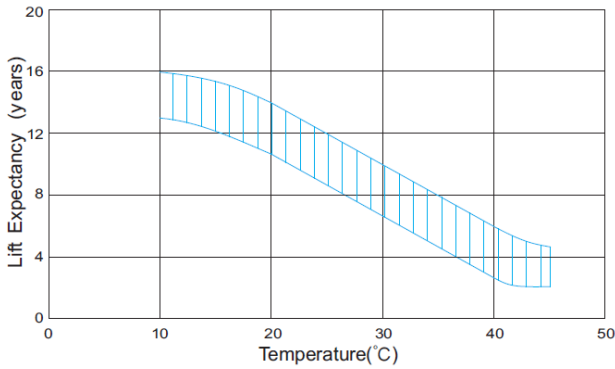
### CONSTANT POWER DISCHARGE CHARACTERISTICS (W at 25°C)

Napięcie / czas	10 min	15 min	30 min	1 h	2 h	3 h	4 h	5 h	8 h	10 h	20 h
9.6 V	2356,7	1931,7	1187,3	684,1	410,3	321,0	255,6	213,5	141,0	117,7	62,1
10.0 V	2269,3	1878,2	1159,5	672,4	399,2	313,0	249,3	207,7	139,9	116,5	61,5
10.2 V	2118,0	1777,8	1103,7	652,7	389,3	301,0	241,4	202,5	138,2	114,3	61,0
10.5 V	1970,9	1678,0	1065,0	634,6	375,4	293,6	235,7	197,9	135,9	113,1	59,9
10.8 V	1815,8	1551,2	1030,6	608,7	366,9	291,9	231,2	195,3	133,7	112,0	59,3
11.1 V	1440,4	1303,2	883,9	546,6	337,8	272,3	217,6	180,6	126,3	105,8	58,8

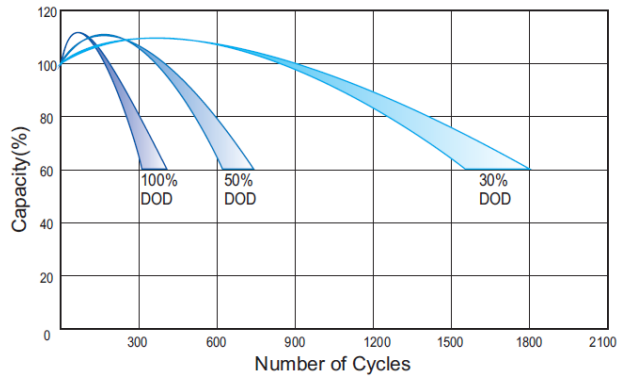
### ACCORDING WITH:

PN-EN 60896-21:2007	ISO 9001
PN-EN 60896-22:2007	ISO 14001
PN-EN 61056-1:2013	
PN-EN 61056-2:2013	
PN-E-83016:1999	

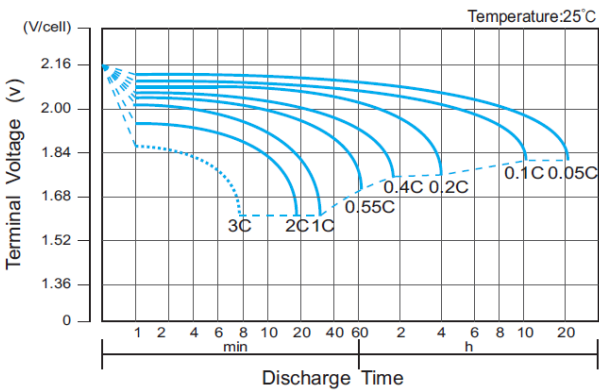
### EFFECT OF TEMPERATURE ON LONG TERM LIFE



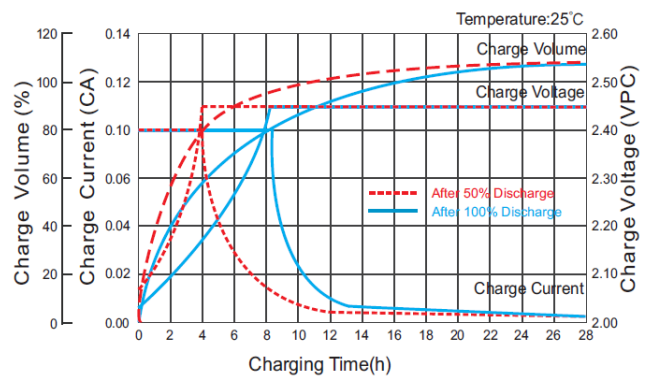
### CYCLE LIFE IN RELATION TO DEPTH OF DISCHARGE



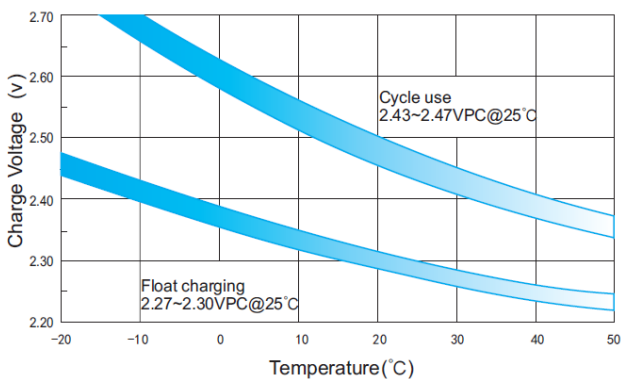
### DISCHARGE CHARACTERISTICS



### CHARGE CHARACTERISTIC FOR CYCLE USE



### RELATIONSHIP BETWEEN CHARGING VOLTAGE AND TEMPERATURE



### STORAGE CHARACTERISTICS

