

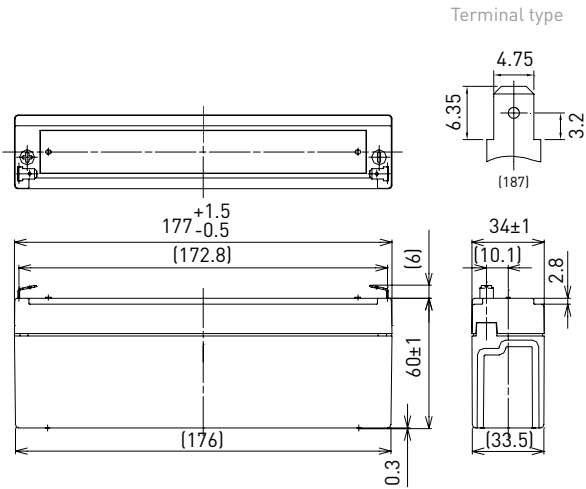
LC-R122R2PG\*1

FOR MAIN AND STANDBY POWER SUPPLIES.  
EXPECTED TRICKLE DESIGN LIFE: 6 - 9 YEARS  
AT 20°C ACCORDING TO EUROBAT.



G188151

DIMENSIONS (MM)

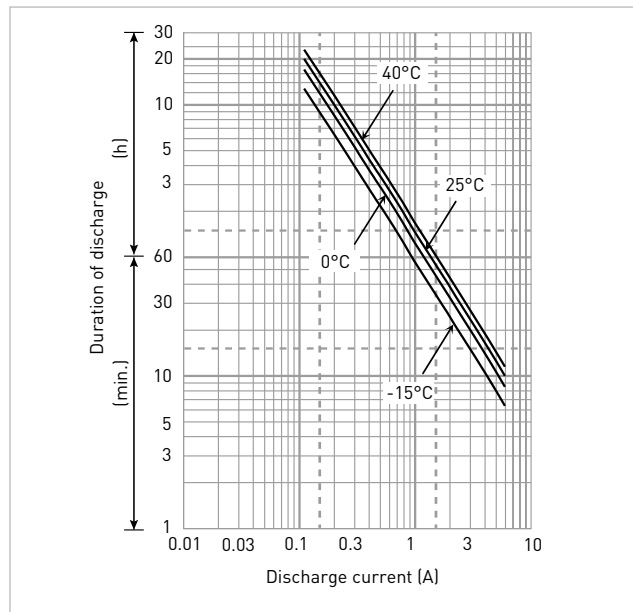


Terminal type

Contents indicated (including the recycle marking, etc.) are subject to change without notice. Battery case resin: standard (UL94 HB)

Specifications		LC-R122R2PG*1
<b>Nominal voltage (V)</b>		12
<b>Nominal capacity</b>	<b>20 hours rate (Ah)</b>	2.2
<b>Dimensions</b>	<b>Length (mm)</b>	34
	<b>Width (mm)</b>	177
	<b>Total height (mm)</b>	66
<b>Approx. mass (kg)</b>		0.80
<b>Terminal type</b>		Faston 187
<b>Capacity (25°C)</b>	<b>20 hours rate (Ah)</b>	2.2
	<b>10 hours rate (Ah)</b>	2.0
	<b>3 hours rate (Ah)</b>	1.8
	<b>1 hour rate (Ah)</b>	1.5
<b>Impedance (mΩ)</b>	<b>Fully charged battery (25°C)</b>	70
	<b>40°C</b>	102
<b>Temperature dependency of capacity (%) - 20 hours rate</b>	<b>25°C</b>	100
	<b>0°C</b>	85
	<b>-15°C</b>	65
	<b>After 3 months (%)</b>	91
<b>Remaining capacity (25°C)</b>	<b>After 6 months (%)</b>	82
	<b>After 12 months (%)</b>	64

DURATION OF DISCHARGE VS. DISCHARGE CURRENT



WATT TABLE (25°C)

(Wattage/battery)

Cut-off	3min.	5min.	10min.	15min.	20min.	30min.	45min.	1h	1.5h	2h	3h	4h	5h	6h	10h	20h
9.6V	132	104	68.1	52.0	43.6	32.5	23.0	18.4	12.6	9.77	7.27	5.59	4.61	3.71	2.46	1.33
9.9V	123	97.8	66.7	51.7	42.9	32.2	22.8	18.2	12.4	9.70	7.24	5.55	4.58	3.69	2.45	1.33
10.2V	113	91.6	65.0	50.6	42.2	31.8	22.6	18.0	12.1	9.44	7.16	5.51	4.54	3.66	2.42	1.32
10.5V	101	82.1	60.2	47.1	40.1	31.1	22.2	17.6	11.9	9.12	7.05	5.48	4.50	3.62	2.41	1.32
10.8V	84.9	72.6	53.7	43.9	39.0	30.0	21.9	17.3	11.5	8.68	6.91	5.40	4.39	3.56	2.38	1.31

AMPERE TABLE (25°C)

(Ampere/battery)

Cut-off	3min.	5min.	10min.	15min.	20min.	30min.	45min.	1h	1.5h	2h	3h	4h	5h	6h	10h	20h
9.6V	11.9	9.35	6.08	4.52	3.76	2.78	1.96	1.56	1.07	0.825	0.611	0.468	0.385	0.309	0.205	0.111
9.9V	11.0	8.77	5.96	4.49	3.70	2.75	1.94	1.55	1.05	0.819	0.608	0.464	0.382	0.308	0.204	0.111
10.2V	10.2	8.22	5.81	4.40	3.64	2.72	1.93	1.53	1.03	0.798	0.602	0.461	0.379	0.306	0.202	0.110
10.5V	9.04	7.36	5.38	4.09	3.45	2.66	1.89	1.50	1.01	0.770	0.593	0.458	0.376	0.302	0.201	0.110
10.8V	7.64	6.51	4.80	3.82	3.36	2.57	1.86	1.47	0.978	0.733	0.581	0.452	0.367	0.297	0.199	0.109

All mentioned values are average values

\*1 This battery is also available with a flame-retardant battery case resin (UL94 V-0): LC-V122R2PG.

# LC-R122R2PG\*1

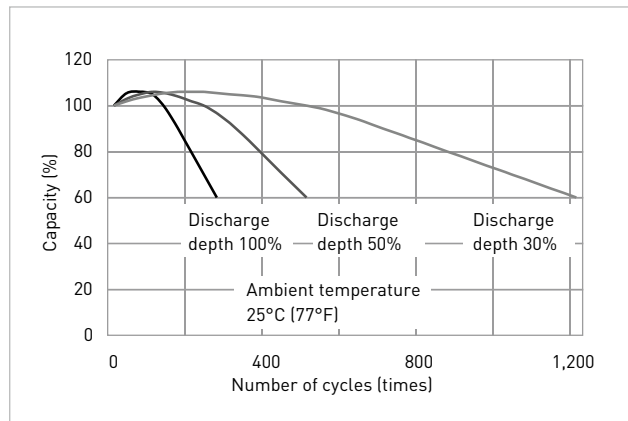
## CHARGING METHOD (25°C)

<b>Cycle use</b>	Control voltage: 14.5V - 14.9V Initial current: 0.88A or smaller
------------------	---

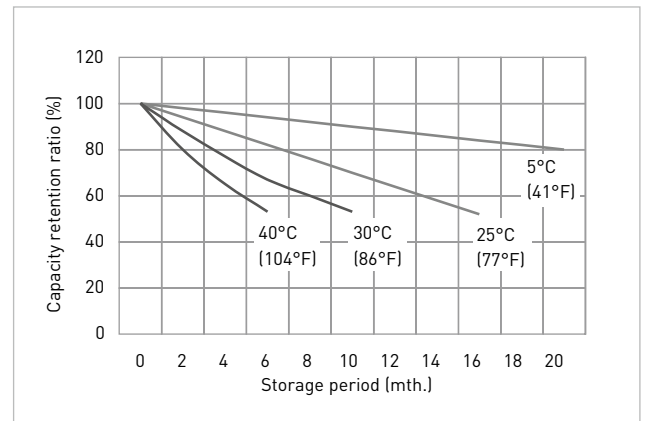
## CUT-OFF VOLTAGE

<b>Discharge current</b>	0.110A - 0.440A	0.440A - 1.10A	1.10A - 2.20A	2.20A - 4.40A	4.40A - 6.60A
<b>Cut-off voltage</b>	10.5V	10.2V	9.9V	9.3V	8.7V

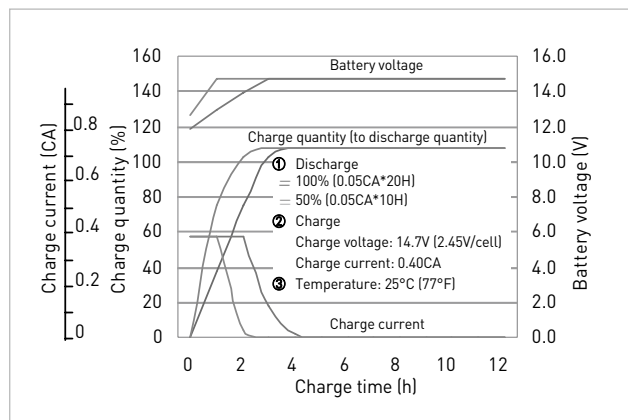
## CYCLE LIFE VS. DEPTH OF DISCHARGE (ACC. IEC 61056)



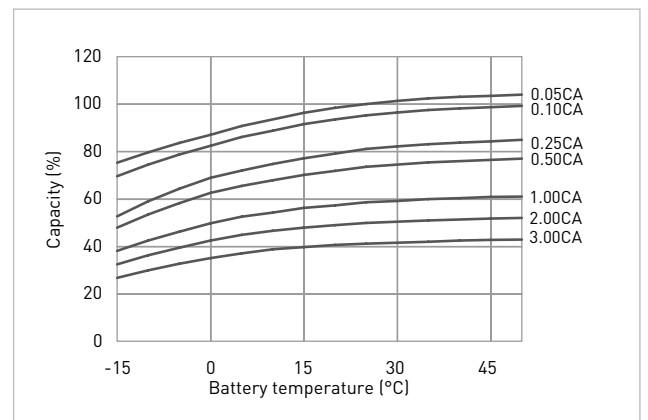
## RESIDUAL CAPACITY TEST RESULT



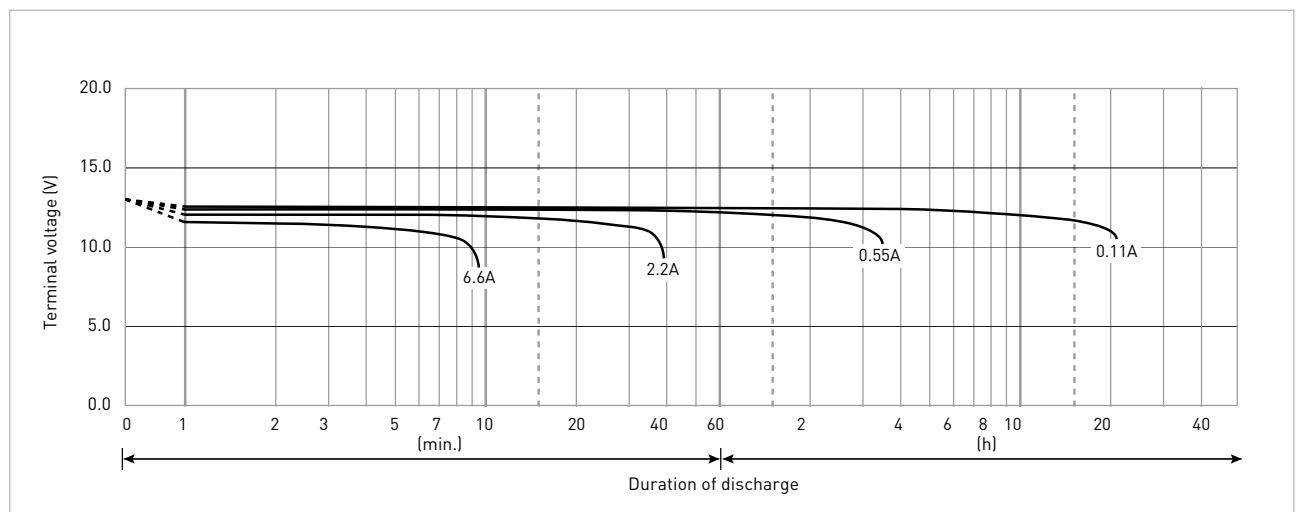
## CONSTANT-VOLTAGE CONSTANT-CURRENT CHARGE CHARACTERISTICS FOR CYCLE USE



## DISCHARGE CAPACITY BY TEMPERATURE AND BY DISCHARGE CURRENT



## DISCHARGE CHARACTERISTICS



\*1 This battery is also available with a flame-retardant battery case resin (UL94 V-0): LC-V122R2PG.